

50
AN HISTORIC ITALIAN COMPANY



CONSTRUCTION

XG



Merlo's factories in San Defendente di Cervasca (Cuneo) cover an area of 300,000 m² (with 220,000 m² inside facilities)

1. Merlo SpA main offices
2. Final assembly lines
3. Lines for assembling components and cabs
4. Moulding of technopolymers
5. Automated storing and shipping centre
6. Machines plus attachments shipping centre
7. Final quality control
8. Technological centre
9. Steel and structural assembly lines centre
10. 3M attachments
11. CFRM (Training & Research Centre)

The Merlo Group

N° 1 for technology and safety

The Merlo brand has always been synonymous with advanced technology in the telehandler field and our history, since 1964, is hallmarked by experience based on determination and passion. The development of complex products, from the idea to the result, from design to sales, means being able to propose orientations for the most competitive markets. The outcome of our efforts are compact, easy to handle telehandlers ensuring incomparable operating performance, comfort, efficiency and safety. **At Agritechnica 2013, three important awards were received that clearly demonstrate the technological and innovative superiority of our products:**

- Turbofarmer 42.7 Hybrid: Gold Medal for innovation at Agritechnica.
- Turbofarmer II: Machine of the year 2014 in the "handling and logistics" category.
- Multifarmer: Selected as a "milestone" in agriculture.

The new modular Medium Duty and Compact Turbofarmer range was named «Machine of the Year» 2015 at Sima 2015 in the handling and logistics sector.

- **> 1.100** employees
- Surface area of **300,000 m²** of which **220,000 m²** are indoors
- **90%** exports
- **600** dealers all over the world
- **8%** of turnover invested in R & D
- **54** robots

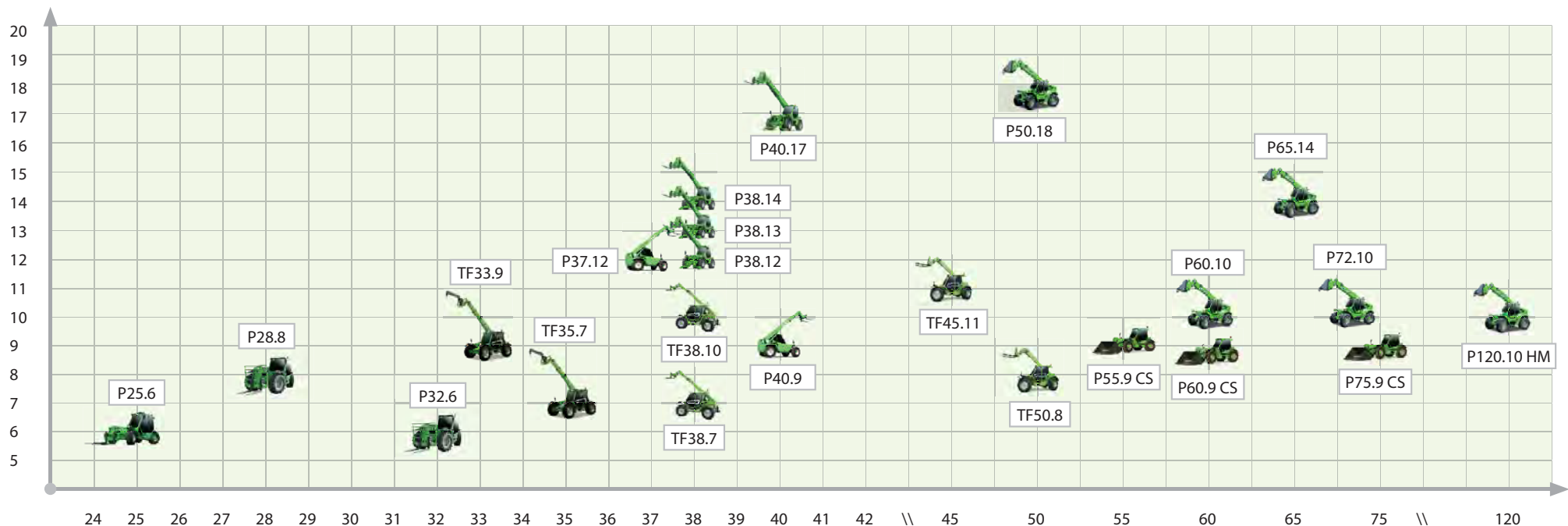


Merlo presents its range of products dedicated to the building industry

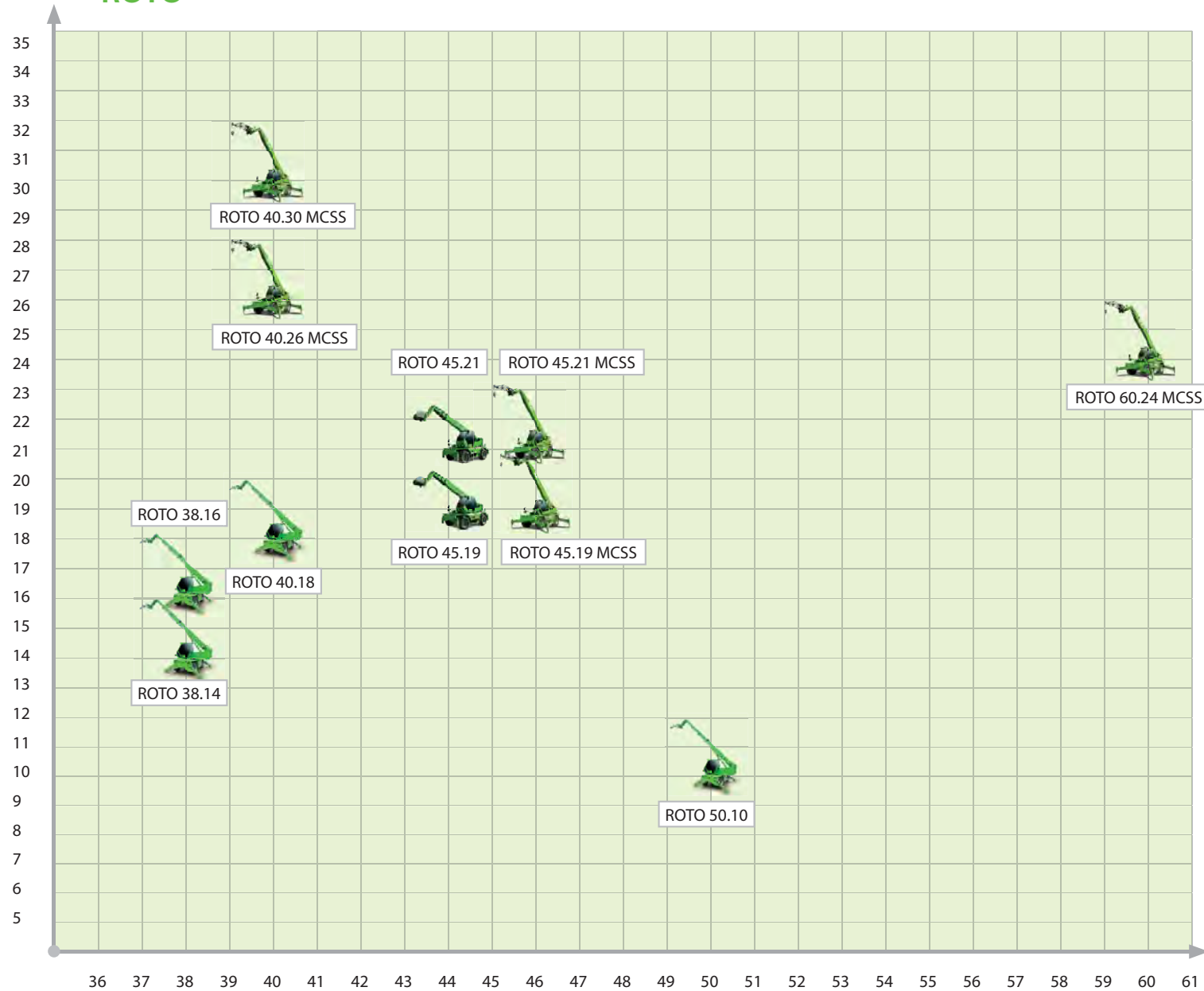
Machines that for over 50 years
have played a leading role on the market
and always forward-looking



TURBOFARMER AND PANORAMIC



ROTO



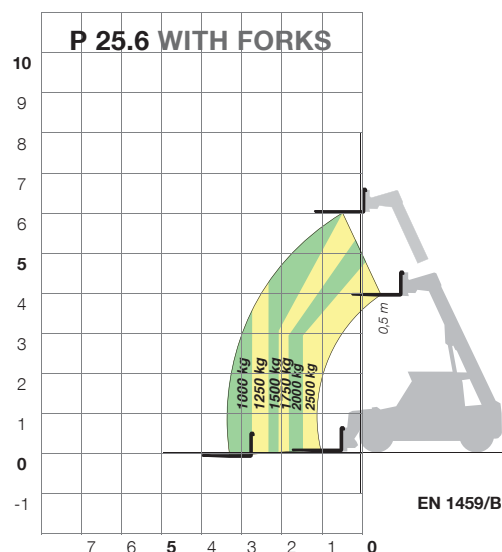


- ✓ The only one in its category with a maximum speed of 40 km/h
- ✓ Continuous gearbox from 0 to 40 km/h without interrupting torque
- ✓ Largest cab in the category (1010 mm).
- ✓ Compact sizes (also available in L version (Low Profile) with cab lowered to 1.77 m). Perfect visibility in every direction

SUPER COMPACT

Practical, versatile and manoeuvrable telehandlers

P25.6 the most comfortable and performing of the category



Merlo has designed a family of «Compact» telehandlers for construction activities, starting from the model P25.6 considered a true «Super-Compact».

It proves to be an indispensable vehicle on sites where reduced width and height (see version «L»), are a prerequisite.

Under these conditions the P25.6 shows its excellent manoeuvrability, practicality and versatility, advantages that contribute to the completion of the work, improving performance with the maximum efficiency, safety and comfort.



TECHNICAL INFORMATION	P 25.6	P 25.6 L
Total unladen mass, with forks (kg)	4750	4750
Maximum capacity (kg)	2500	2500
Lifting height (m)	5,9	5,9
Turbo engine (brand/cylinders)	Kubota/4	Kubota/4
Tier 3 engine power (kW/HP)	55/75	55/75
Maximum speed (km/h)	40	40
Hydraulic system	Gears	Gears
FOPS (ISO 3449) and ROPS (ISO 3471) cab	●	●
Width (mm)	1800	1800
Height (mm)	1920	1770
Length (mm)	3900	3900

● As standard. ○ On request.



- ✓ The largest cab in the category (1010 mm)
- ✓ The only one in its category with a maximum speed of 40 km/h as standard
- ✓ Compact dimensions (also available in L version (Low Profile) with cab lowered to 2.0 m)
- ✓ Reverse shuttle on joystick and on steering wheel (Dual Control)
- ✓ Load-Sensing pump - 117 l/min and Flow Sharing distributor (Top)
- ✓ Excellent steering capacity

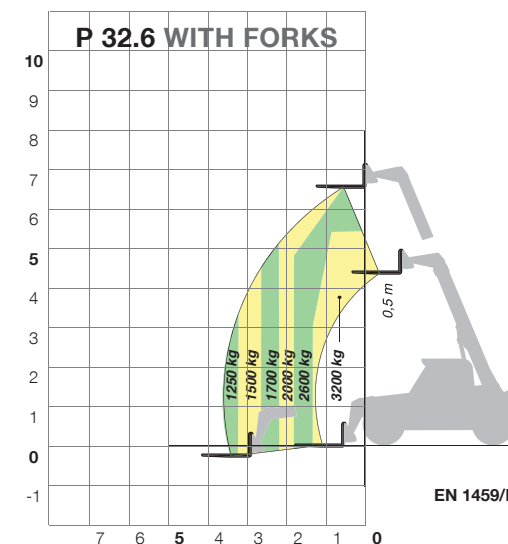
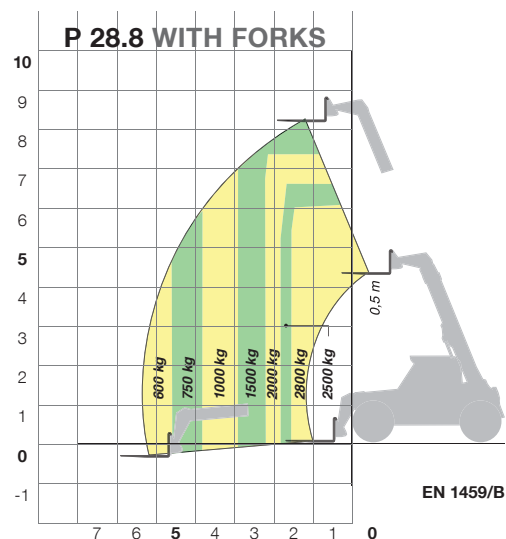


COMPACTS

Compact family handy and versatile

P28.8 and P32.6: 101 HP for maximum performance and versatility

The Compact Family models P28.8 and P32.6 are designed for building applications, where compact dimensions and excellent manoeuvrability and versatility are necessary. Merlo Compacts can lift loads up to 3.2 tonnes (P32.6) at heights up to 8.2 meters (P28.8). They are equipped with electronically-controlled Tier 4 Interim engines of 74.5kW/101HP, Max torque 325 Nm at 1500 rpm.

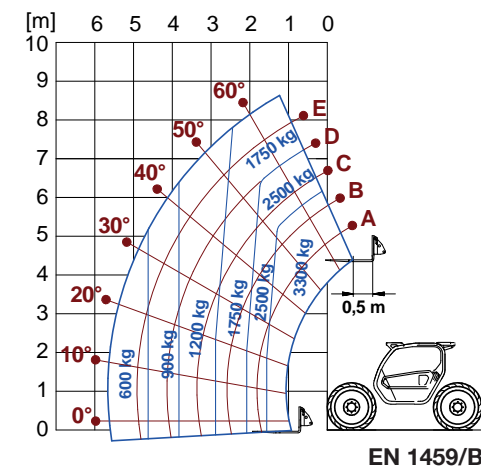


TECHNICAL INFORMATION	P28.8 Plus	P 28.8 Top	P32.6 Plus	P 32.6 Top
Total unladen mass, with forks (kg)	6400	6400	6150	6150
Maximum capacity (kg)	2800	2800	3200	3200
Lifting height (m)	8,2	8,2	6,4	6,4
Turbo engine (brand/cylinders)	Kubota/4	Kubota/4	Kubota/4	Kubota/4
Tier 4 Interim engine power (kW/HP)	74,5/101	74,5/101	74,5/101	74,5/101
Maximum speed (km/h)	40	40	40	40
Hydraulic system	Gears	Load Sensing	Gears	Load Sensing
FOPS (ISO 3449) and ROPS (ISO 3471) cab	●	●	●	●
Width (mm)	2000	2000	2000	2000
Height (mm)	2150 ⁽¹⁾	2150	2150 ⁽¹⁾	2150
Length (mm)	4260	4260	4220	4220

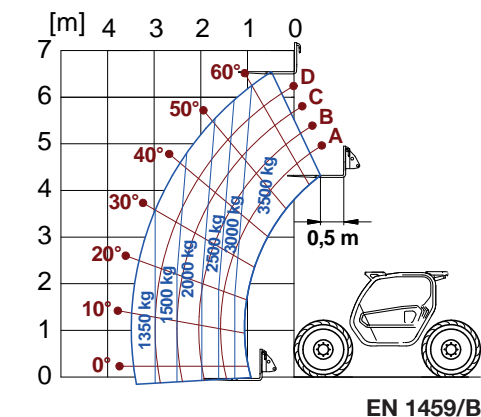
⁽¹⁾ L - Low Profile version available with cab lowered to 2 metres. ● As standard. ○ On request.

- ✓ The widest cab in the category (1010 mm)
- ✓ Level II ROPS and FOPS cab compliant
- ✓ "CS" Suspended cab, patented solution
- ✓ "Dual Control" reverse shuttle on joystick and steering wheel
- ✓ Automatic accelerator on the joystick (optional)
- ✓ Maximum speed 40 km/h as standard
- ✓ M CDC Light with traffic light on the steering column
- ✓ -18% consumption with EPD as standard
- ✓ Two-speed hydrostatic transmission
- ✓ Load-Sensing or Gear pump

TF 33.9 WITH FORKS



TF 35.7 WITH FORKS



DIMENSIONS TURBOFARMER MEDIUM DUTY

Height (mm)	2250
Width (mm)	2240
Lenght (mm)	4300

MEDIUM DUTY

A new family of modular telehandlers Turbofarmer Medium Duty

Cutting-edge technology and performance



The Panoramic family is now expanded thanks to a new range of telehandlers in one of the most important sectors of the building and construction sector - 3.3 & 3.5 tonnes for heights of 9 and 7 metres - named Medium Duty. The range has two basic models - TF35.7 and TF33.9 - available in 10 different versions, with two engines - 75 HP and 122 HP - these models provide compact dimensions among the best in their category, thereby ensuring maximum safety, comfort and productivity.



TECHNICAL INFORMATION	TF 35.7 - 75 G	TF 35.7 - 120 G	TF 35.7 - 120	TF 35.7 - 120 G CS	TF 35.7 - 120 CS	TF 33.9 - 75 G	TF 33.9 - 120 G	TF 33.9 - 120	TF 33.9 - 120 G CS	TF 33.9 - 120 CS
Total unladen mass, with forks (kg)	6500	6500	6500	6500	6500	6700	6700	6700	6700	6700
Maximum capacity (kg)	3500	3500	3500	3500	3500	3300	3300	3300	3300	3300
Lifting height (m)	6,7	6,7	6,7	6,7	6,7	8,6	8,6	8,6	8,6	8,6
Turbo engine (brand/cylinders)	3,6/4	3,6/4	3,6/4	3,6/4	3,6/4	3,6/4	3,6/4	3,6/4	3,6/4	3,6/4
Tier 4 Interim engine power (kW/HP)	55/75	90/122	90/122	90/122	90/122	55/75	90/122	90/122	90/122	90/122
Maximum speed (km/h)	40	40	40	40	40	40	40	40	40	40
Hydraulic system	Gears	Gears	Load Sensing	Gears	Load Sensing	Gears	Gears	Load Sensing	Gears	Load Sensing
"CS" Suspended cab	-	-	-	●	●	-	-	-	●	●
EPD Eco Power Drive	Standard	Standard	Top	Standard	Top	Standard	Standard	Top	Standard	Top
Gearbox	2 speeds	2 speeds	2 speeds	2 speeds	2 speeds	2 speeds	2 speeds	2 speeds	2 speeds	2 speeds

● As standard. ○ On request.

VERSIONI TF38.7 AND TF38.10

- ✓ Level II ROPS and FOPS cab compliant
- ✓ M CDC Dynamic load control as standard
- ✓ The cab is the widest in its category at 1010 mm
- ✓ Standard cab on silent-block
- ✓ -18% consumption with EPD as standard
- ✓ 122 HP Tier 4 Interim Engines
- ✓ Levelling + boom side shift
- ✓ Booms from 7 to 10 metres
- ✓ Tac-Lock rapid coupling of the attachments
- ✓ Hydraulic system: Gear pump or Load-sensing pump
- ✓ 2 speeds hydrostatic transmission



PANORAMIC W/O STABILIZERS

A new family of Panoramic without stabilizers

Tier 4 Interim construction telehandlers from 7 to 12 metres

TECHNICAL INFORMATION	TF 38.7 -120 (G)	TF 38.7 -120	TF 38.7 TT -120	TF 38.10 -120 (G)	TF 38.10 -120	TF 38.10 TT - 120	P40.9 PLUS	P 37.12 PLUS
Total unladen mass, without forks (kg)	7450	7450	7900	7900	7900	8350	7900	8400
Maximum capacity (kg)	3800	3800	3800	3800	3800	3800	4000	3700
Lifting height (m)	7,1	7,1	7,1	9,6	9,6	9,6	9	11,5
Turbo engine (displacement/cylinders)*	3.6/4	3.6/4	3.6/4	3.6/4	3.6/4	3.6/4	3.6/4	3.6/4
Tier 4 Interim engine power (kW/HP)*	90/122	90/122	90/122	90/122	90/122	90/122	75/101	75/100
Maximum speed (km/h)	40	40	40	40	40	40	40	40
BSS hydro-pneumatic boom suspension	○	○	○	○	○	○	○	○
EAS "Electronic Active Suspension" (not available with BSS)	-	-	-	-	-	-	○	○
Gear pump. Overall oil press./flow (bar-l/min)**	210/136	-	-	210/136	-	-	-	-
Load-sensing pump Overall oil press./flow (bar-l/min)**	-	210/171	210/171	-	210/171	210/171	210/108	210/108
"Fan drive" pump included in total flow (l/min)	46	46	46	46	46	46	-	-
FOPS (ISO 3449) and ROPS (ISO 3471) cab	●	●	●	●	●	●	●	●
Electromechanical joystick	●	●	●	●	●	●	●	●
Electronic joystick	-	○	○	-	○	○	○	○
Hydrostatic transmission	●	●	●	●	●	●	●	●
Dual Control Reverse Shuttle (joystick/steering wheel)	●	●	●	●	●	●	-	-
Reverse shuttle at steering wheel	-	-	-	-	-	-	●	●
Inching-Control pedal movement control	●	●	●	●	●	●	●	●
Permanent all wheel drive and four-wheel steering mode	●	●	●	●	●	●	●	●
Gearbox	2 speeds	2 speeds	2 speeds	2 speeds	2 speeds	2 speeds	2 speeds	2 speeds
Tilting chassis + lateral shift	-	-	●	-	-	●	●	●
M CDC Dynamic Load Control	○	●	●	○	●	●	●	●
M CDC LIGHT - Dynamic Load Control*	●	-	-	●	-	-	-	-

*M CDC LIGHT with traffic light in the cab (conforming to EN15000 standards), is not fitted with: Display, Automatic attachment recognition, No platform assembly) ** Dedicated oil flow rate for gear pump boom 90 L/min; engine 122 HP 125 l/min; Engine 156 HP 130 l/min.

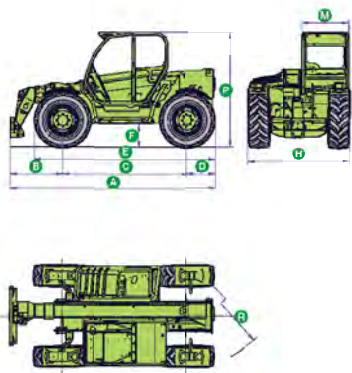
● As standard. ○ On request.



VERSIONI P40.9 PLUS E P37.12 PLUS

- ✓ Standard cab + reverse shuttle
- ✓ 101 HP Tier 4 Interim engine
- ✓ TT chassis as standard
- ✓ M CDC con display da 5,5"
- ✓ Hydrostatic transmission with 2 gears
- ✓ Optional BSS and EAS suspensions

TF 38.7

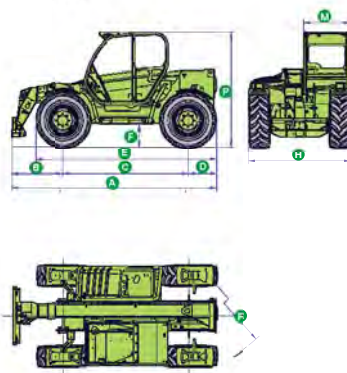


DIMENSIONS TF 38.7

A (mm)	4487	F (mm)	460
B (mm)	1150/1100*	H (mm)	2250
C (mm)	2750/2800*	M (mm)	995
D (mm)	587	P (mm)	2465
E (mm)	3926/3976*	R (mm)	3985

* versione TT

TF 38.10

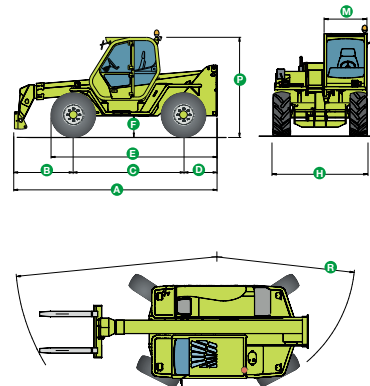


DIMENSIONS TF 38.10

A (mm)	4487	F (mm)	460
B (mm)	1150/1100*	H (mm)	2250
C (mm)	2750/2800*	M (mm)	995
D (mm)	587	P (mm)	2465
E (mm)	3926/3976*	R (mm)	3985

* versione TT

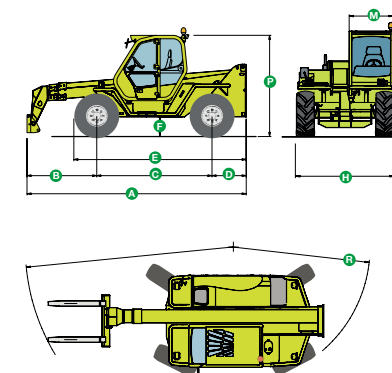
P 40.9 PLUS



DIMENSIONS P 40.9 PLUS

A (mm)	4995	F (mm)	480
B (mm)	1430	H (mm)	2220
C (mm)	2750	M (mm)	995
D (mm)	815	P (mm)	2440
E (mm)	4100	R (mm)	3920

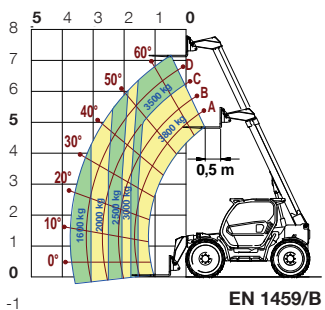
P 37.12 PLUS



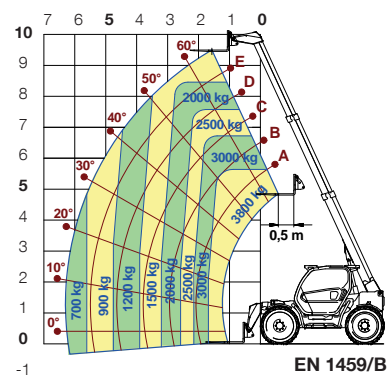
DIMENSIONS P 37.12 PLUS

A (mm)	4850	F (mm)	480
B (mm)	1285	H (mm)	2200
C (mm)	2750	M (mm)	995
D (mm)	815	P (mm)	2440
E (mm)	4100	R (mm)	3920

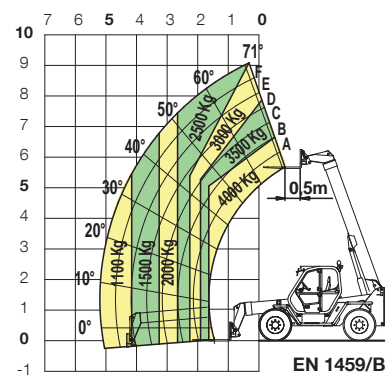
TF 38.7 WITH FORKS



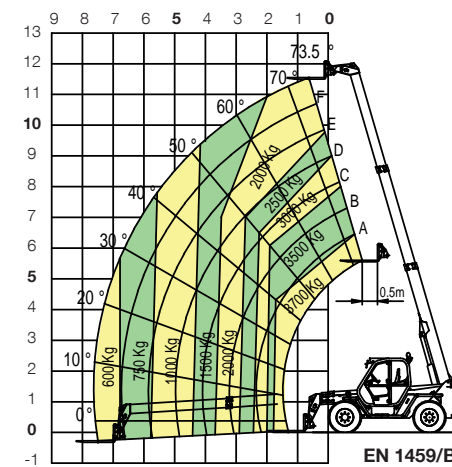
TF 38.10 WITH FORKS



P 40.9 PLUS WITH FORKS



P 37.12 PLUS WITH FORKS





- ✓ Level II ROPS and FOPS cab compliant
- ✓ M CDC Dynamic load control as standard
- ✓ The widest cab in its category at 1010 mm
- ✓ CS suspended cab: a unique and patented solution
- ✓ -18% consumption with EPD as standard
- ✓ 122 HP engines without particulate filter or 156 HP
- ✓ Booms from 8 to 11 metres Capacities from 4.5 to 5 tons
- ✓ Version T: tilt correction

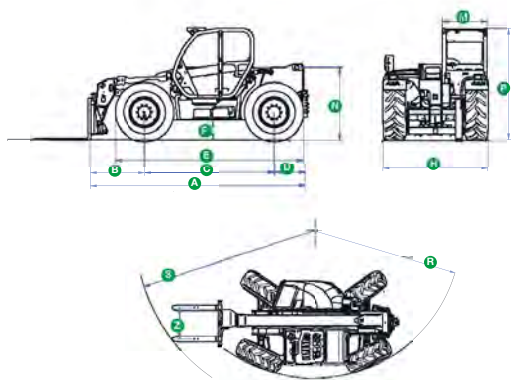
HEAVY DUTY

The new Heavy Duty range

High performance for construction sectors in the segment from 8 to 11 meters

The front telehandlers are enriched by a range called Heavy Duty, high capacity telehandlers able to meet new market demands. These Heavy Duty models ensure high levels of comfort and can handle 5 t loads at 8 metres (TF50.8) or 4.5 t loads at 11 metres (TF45.11).

They incorporate new systems that improve safety, productivity, comfort and energy saving - the latter feature is especially appreciated thanks to major cost savings for fuel achieved by the EPD system.



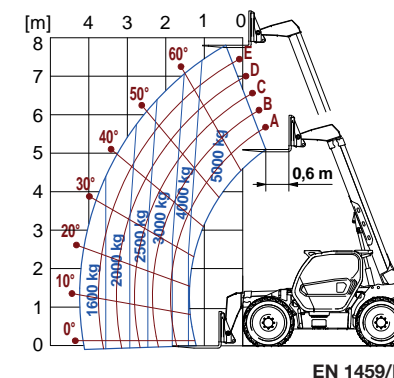
DIMENSIONS	TF 50.8	TF 45.11
A (mm)	4835	4970
B (mm)	1220	1380
C (mm)	2920	2920
D (mm)	670	670
E (mm)	4240	4240
F (mm)	450	450
H (mm)	2360	2360
M (mm)	1010	1010
N (mm)	1630	1630
P (mm)	2525 min - 2585 med	2525 min - 2585 med
R (mm)	4080	4080
S (mm)	4970	5050
Z (mm)	850	850

Tyres 500/70 R24

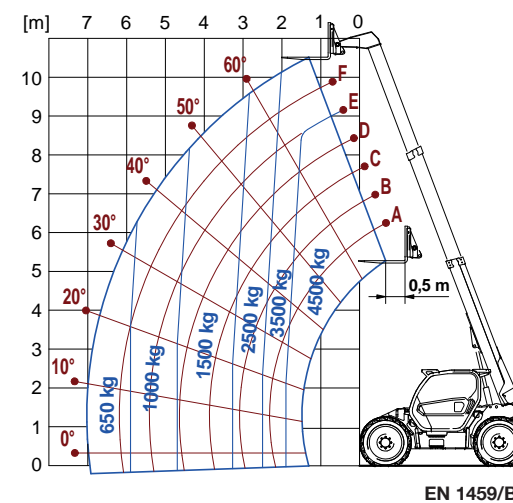
TECHNICAL INFORMATION	TF 50.8 T-120	TF 50.8 T CS-156 CVT	TF 45.11 T-120	TF 45.11 T CS-156 CVT
Total unladen mass, without forks (kg)	9400	9400	9700	9700
Maximum capacity (kg)	5000	5000	4500	4500
Lifting height (m)	7,8	7,8	10,6	10,6
Turbo engine (displacement/cylinders)	3.6/4	4.1/4	3.6/4	4.1/4
Tier 4 Interim engine power (kW/HP)	90/122	115/156	90/122	115/156
Maximum speed (km/h)	40	40	40	40
Hydraulic Load-Sensing pump (bar-l/min)	210/146	210/152	210/146	210/152
Flow Sharing distributor	●	●	●	●
Gearbox	2 speeds	CVTronic	2 speeds	CVTronic
"CS" suspended cab	-	●	-	●
Tilting chassis	●	●	●	●
EPD Eco Power Drive	EPD Top	EPD Top	EPD Top	EPD Top
M CDC Dynamic Load Control	●	●	●	●

⁽¹⁾ L - Low Profile version available with cab lowered to 2 metres. ● As standard. ○ On request.

TF 50.8 WITH FORKS



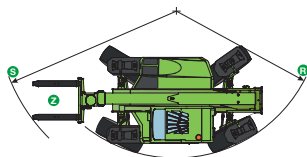
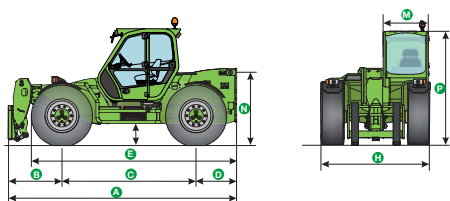
TF 45.11 WITH FORKS





- ✓ The suspended cab is unique, patented and the largest in its category
- ✓ Level II ROPS and FOPS cab compliant
- ✓ M CDC Dynamic Load Control
- ✓ Tilting system
- ✓ BSS boom suspension (optional)
- ✓ Standard Tac-Lock
- ✓ -18% consumption with EPD - Eco Power Drive
- ✓ 156 HP Tier 4 Interim engine and Fan Drive as standard
- ✓ Load Sensing hydraulic pump and Flow-Sharing distributor
- ✓ Electronic Joystick with auto-accelerating function as standard

PANORAMIC CS



DIMENSIONS	PANORAMIC CS
A (mm)	5120
B (mm)	1210
C (mm)	3000
D (mm)	910
E (mm)	4600
F (mm)	480
H (mm)	2420
M (mm)	1010
N (mm)	1620
P (mm)	2440 min - 2500 med
R (mm)	4420
S (mm)	5100
Z (mm)	850

Even more innovative and high-performing

New technologies for new fields of application

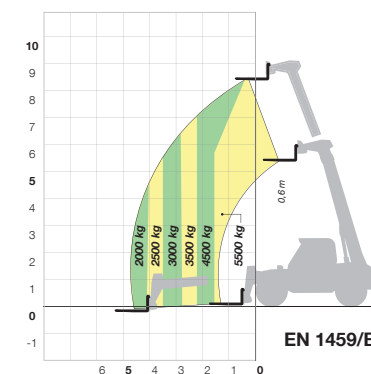
Panoramic CS machines were the first Merlo telehandlers to be fitted with suspended cabs as standard with in order to ensure high comfort levels - an achievement still unequalled by the competition.

The CS range belongs to the 9 m class and offer three models - P55.9 CS, P60.9 CS, P75.9 CS. Load capacities from 5.5 to 7.5 tonnes.

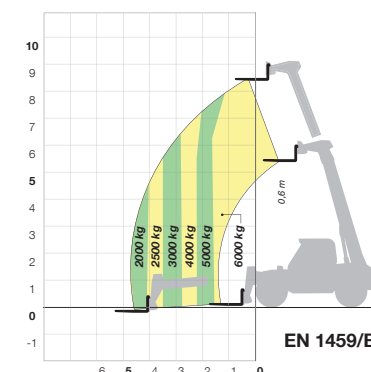
TECHNICAL INFORMATION	P 55.9 CS	P 60.9 CS	P 75.9 CS
Total unladen mass, without forks (kg)	10320	10940	11400
Maximum capacity (kg)	5500	6000	7500
Lifting height (m)	8,6	8,6	8,6
Tier 4 Interim engine power (kW/CV)	115/156	115/156	115/156
Maximum speed (km/h)	40	40	40
Hydraulic Load-Sensing pump (bar-l/min)	240/176	240/176	240/176
Flow Sharing Distributor	●	●	●
Gearbox	2 speeds	2 speeds	2 speeds
"CS" Suspended cab	●	●	●
Chassis with levelling	●	●	●
EPD Eco Power Drive	●	●	●
BSS hydro-pneumatic boom suspension	●	●	●
Electronic joystick with automatic accelerator	●	●	●
M CDC Dynamic Load Control	●	●	●
Dual Control Reverse Shuttle (joystick/steering wheel)	●	●	●

● As standard. ○ On request.

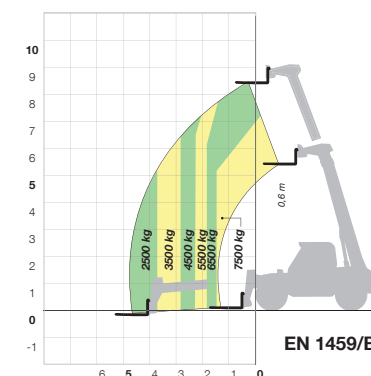
P 55.9 CS WITH FORKS



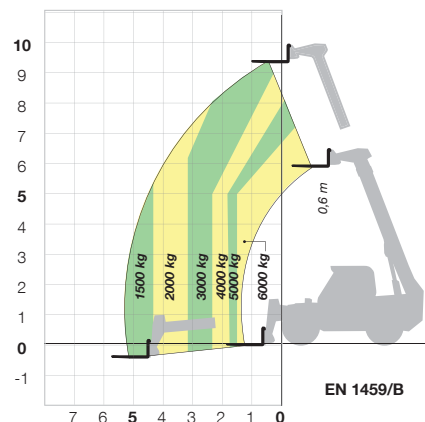
P 60.9 CS WITH FORKS



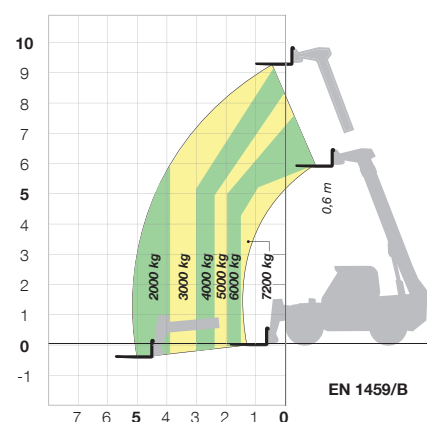
P 75.9 CS WITH FORKS



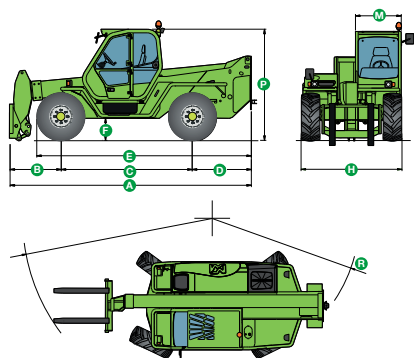
P60.10 WITH FORKS



P72.10 WITH FORKS



P 60.10 and P 72.10



DIMENSIONS P 60.10

A (mm)	5345
B (mm)	1235
C (mm)	2875
D (mm)	1300
E (mm)	4645
F (mm)	480
H (mm)	2240
M (mm)	995
P (mm)	2440
R (mm)	3950

DIMENSIONS P 72.10

A (mm)	5345
B (mm)	1235
C (mm)	2875
D (mm)	1300
E (mm)	4645
F (mm)	480
H (mm)	2240
M (mm)	995
P (mm)	2440
R (mm)	3950



Panoramic High Capacity, high specifications for high performances

Even more advantages and benefits

Merlo has two distinct families in the high-capacity class: the first belongs to the high-end Panoramic range with lifting capacities from 6.0 and 7.2 tonnes (P60.10 & P72.10) in the 10 metre class; the second, named HM, completes the offering with load capacities up to an impressive 12 tonnes with booms from 10 up to 18 metres (P50.18HM P65.14HM P120.10HM). Since the latter is a specific family, the characteristics are also different.

TECHNICAL INFORMATION	P60.10	P72.10	P50.18 HM	P65.14HM	P120.10HM
Total unladen mass, without forks (kg)	9800	10650	15410	15500	15650
Maximum capacity (kg)	6000	7200	5000	6500	12000
Lifting height (m)	9,5	9,4	17,8	13,9	9,8
Tier 4 Interim engine power (kW/HP)	74,5/101	74,5/101	129/176	129/176	129/176
Maximum speed (km/h)	40	40	40	40	40
Hydraulic Load-Sensing pump (bar-l/min)	240/104	240/104	210/115	210/115	210/115
Flow Sharing Distributor	-	-	●	●	●
Gearbox	2 speeds	2 speeds	CVTronic	CVTronic	CVTronic
Chassis levelling + side shift	●	●	●	●	●
Regenerative system + Automatic accelerator	-	-	●	●	●
EPD Eco Power Drive	-	-	●	●	●
BSS hydro-pneumatic boom suspension	○	○	●	●	●
Electronic joystick	●	●	●	●	●
M CDC Dynamic Load Control	●	●	-	-	-
Reverse shuttle at steering wheel	●	●	-	-	-
Dual Control Reverse Shuttle (joystick/steering wheel)	-	-	●	●	●

● As standard. ○ On request.

PANORAMIC HM

Shared specifications:

- ✓ The largest cab in its category. the best comfort level
- ✓ Level II ROPS and FOPS cam compliant
- ✓ M CDC Dynamic load control as standard
- ✓ Tilting system and boom side shift as standard
- ✓ Hydraulic load sensing as standard

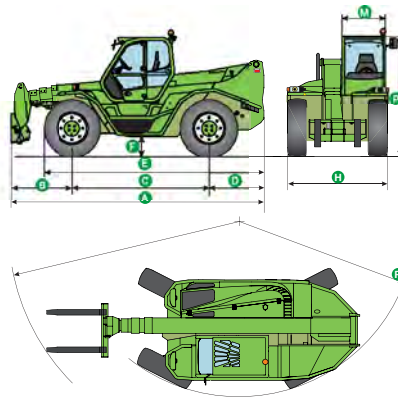
Panoramic series:

- ✓ Engines: powers of 101 HP (no DPF or SCR)
- ✓ Hydrostatic transmission with 2 speed gearbox
- ✓ Agricultural type-approval

HM series:

- ✓ -18% consumption with EPD (standard on HM)
- ✓ HM power 176 HP with SCR
- ✓ CVTronic transmission (standard on HM)
- ✓ Regenerative system (standard on HM)
- ✓ Electronic Joystick with auto-accelerating and reversing system, duplicated on the steering wheel

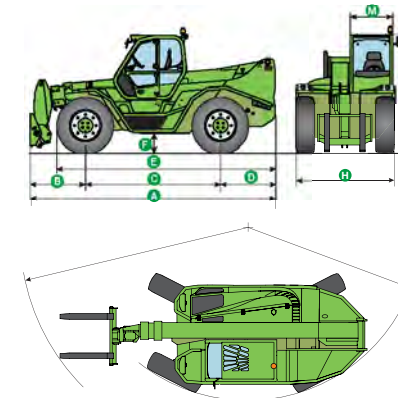
P 50.18 HM



DIMENSIONS P50.18 HM

A (mm)	6180	F (mm)	450
B (mm)	1605	H (mm)	2400
C (mm)	3240	M (mm)	1010
D (mm)	1335	P (mm)	2850
E (mm)	5235	R (mm)	4300

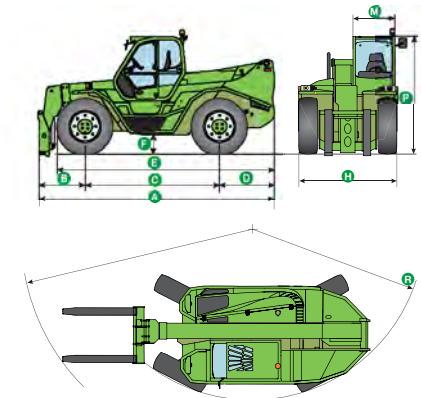
P65.14 HM



DIMENSIONS P65.14 HM

A (mm)	5910	F (mm)	450
B (mm)	1335	H (mm)	2400
C (mm)	3240	M (mm)	1010
D (mm)	1335	P (mm)	2850
E (mm)	5235	R (mm)	4300

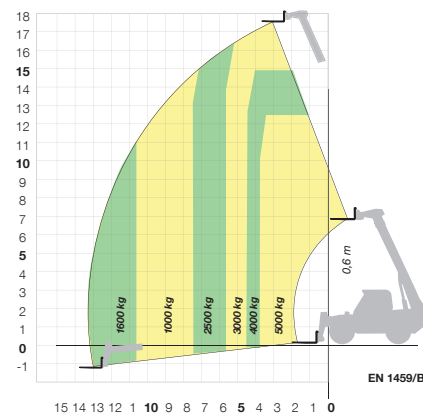
P120.10 HM



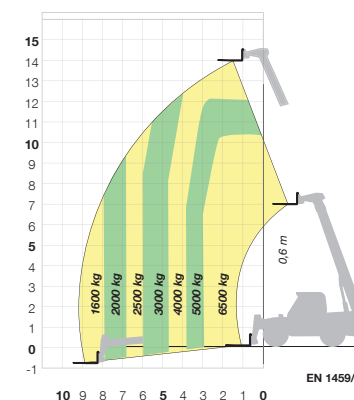
DIMENSIONS P120.10 HM

A (mm)	5740	F (mm)	450
B (mm)	1160	H (mm)	2400
C (mm)	3240	M (mm)	1010
D (mm)	1335	P (mm)	2850
E (mm)	5235	R (mm)	4300

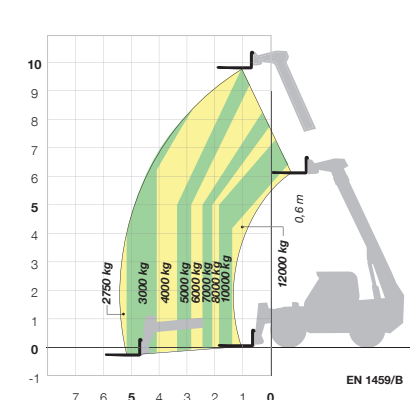
P50.18 HM WITH FORKS



P65.14 HM WITH FORKS



P120.10 HM WITH FORKS





- ✓ FOPS/ROPS cab compliant
- ✓ M CDC Merlo dynamic load control with display in cab (Plus version)
- ✓ Titling system for maximum safety
- ✓ BSS: Boom Suspension System (optional)
- ✓ EAS: Electronic Active Suspension (optional)
- ✓ Independent stabilisers
- ✓ 75 HP Tier 3 engine - Basic version, 101 HP Tier 4 Interim engine - Plus version
- ✓ Hydraulic system: Load-Sensing Pump
- ✓ Electro-mechanical Joystick (Plus version)
- ✓ Tac-Lock: attachments quick coupling system

PANORAMIC WITH STABILIZERS

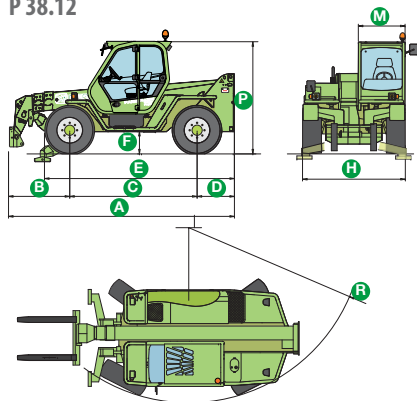
A complete range of stabilized telehandlers

Record breaking performances and reliability

DATI TECNICI	P 38.12	P 38.12 PLUS	P 38.13	P 38.13 PLUS	P 38.14	P 38.14 PLUS	P 40.17	P 40.17 PLUS
Total unladen mass, with forks (kg)	8550	8550	8650	8650	9050	9050	10350	10350
Maximum capacity (kg)	3800	3800	3800	3800	3800	3800	4000	4000
Lifting height (m)	11,7	11,7	12,6	12,6	13,6	13,6	16,7	16,7
Boom side-shift (mm)	±330	±330	±345	±345	±345	±345	±435	±435
Frame levelling (%)	±10	±10	±10	±10	±10	±10	±10	±10
Engine output (kW/HP)	55/75	74/101	55/75	74/101	55/75	74/101	55/75	74/101
Maximum speed (km/h)	33	40	33	40	33	40	33	40
EAS hydro-pneumatic suspension ⁽¹⁾	○	○	○	○	○	○	○	○
BSS hydro-pneumatic boom suspens ^{ion}	○	○	○	○	-	-	-	-
Hydraulic Load-Sensing pump (bar-l/min)	210-115	210-108	210-115	210-108	210-115	210-108	210-115	210-108
FOPS (ISO 3449) and ROPS (ISO 3471) cab	●	●	●	●	●	●	●	●
Lever-operated controls	●	-	●	-	●	-	●	-
Electromechanical joystick	○	●	○	●	○	●	○	●
Electronic joystick	○	○	○	○	○	○	○	○
Tac-Lock equipment locking	●	●	●	●	●	●	●	●
Auxiliary hydraulic service on boom	●	●	●	●	●	●	●	●
Hydrostatic transmission	●	●	●	●	●	●	●	●
Reverse shuttle at steering wheel	●	●	●	●	●	●	●	●
Inching-Control pedal movement control	●	●	●	●	●	●	●	●
Permanent four-wheel drive	●	●	●	●	●	●	●	●
Dynamic load control M CDC (Light) + indicator	●	-	●	-	●	-	●	-
Dynamic load control M CDC + display	○	●	○	●	○	●	○	●
Automatic attachment recognition	○	●	○	●	○	●	○	●

(1) EAS and BSS suspensions cannot be supplied together. ● As standard. ○ On request.

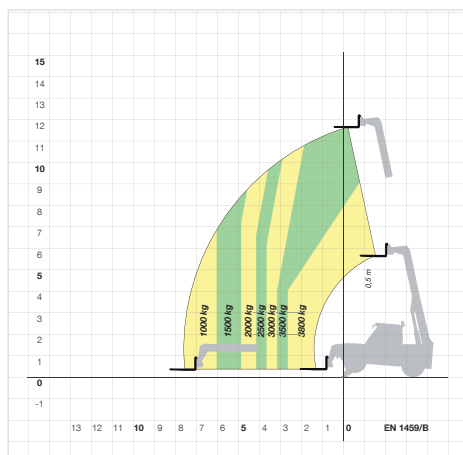
P 38.12



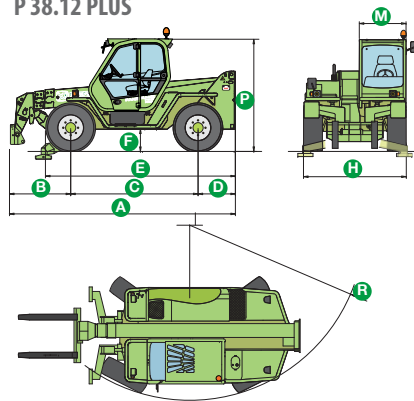
DIMENSIONS P 38.12

A (mm)	4850	F (mm)	480
B (mm)	1285	H (mm)	2220
C (mm)	2750	M (mm)	995
D (mm)	815	P (mm)	2440
E (mm)	4100	R (mm)	3920

P 38.12 / PLUS WITH FORKS
ON STABILIZERS



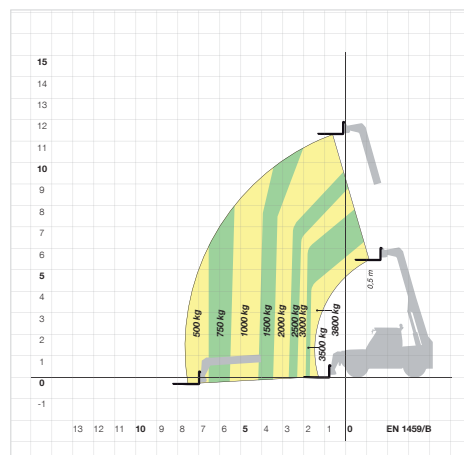
P 38.12 PLUS



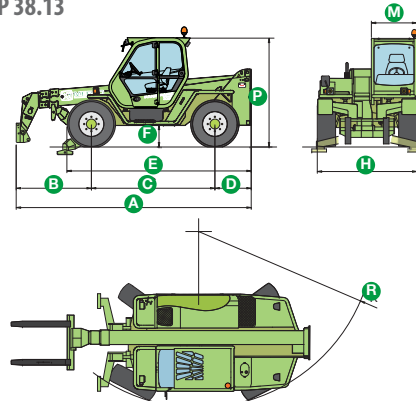
DIMENSIONS P 38.12 PLUS

A (mm)	4850	F (mm)	480
B (mm)	1285	H (mm)	2220
C (mm)	2750	M (mm)	995
D (mm)	815	P (mm)	2440
E (mm)	4100	R (mm)	3920

P 38.12 / PLUS WITH FORKS
ON TYRES



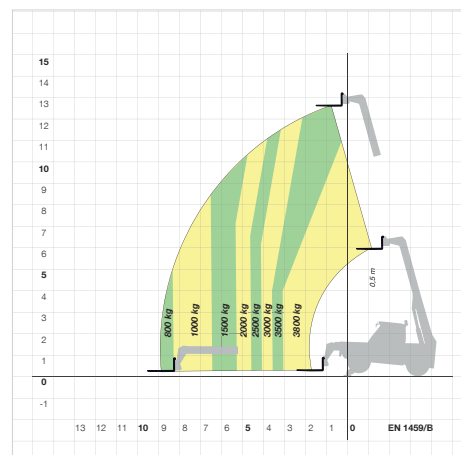
P 38.13



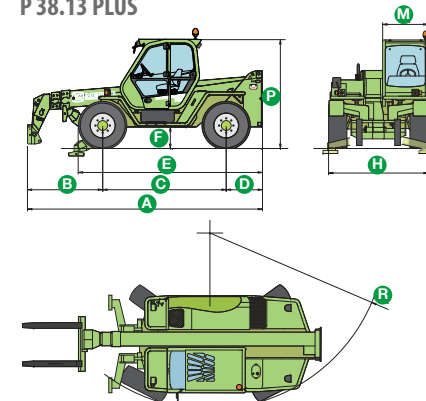
DIMENSIONS P 38.13

A (mm)	5240	F (mm)	480
B (mm)	1675	H (mm)	2220
C (mm)	2750	M (mm)	995
D (mm)	815	P (mm)	2440
E (mm)	4100	R (mm)	3920

P 38.13 / PLUS WITH FORKS
ON STABILIZERS



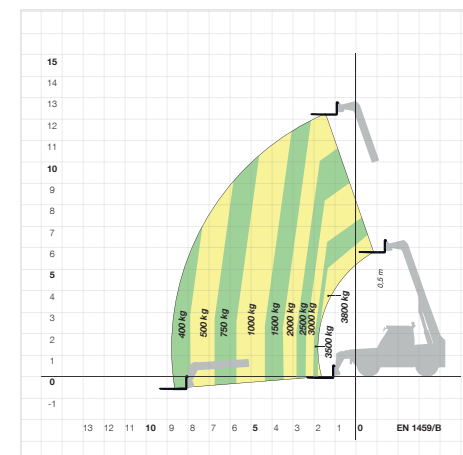
P 38.13 PLUS



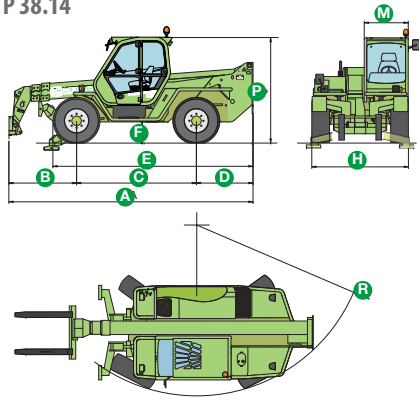
DIMENSIONS P 38.13 PLUS

A (mm)	5240	F (mm)	480
B (mm)	1675	H (mm)	2220
C (mm)	2750	M (mm)	995
D (mm)	815	P (mm)	2440
E (mm)	4100	R (mm)	3920

P 38.13 / PLUS WITH FORKS
ON TYRES

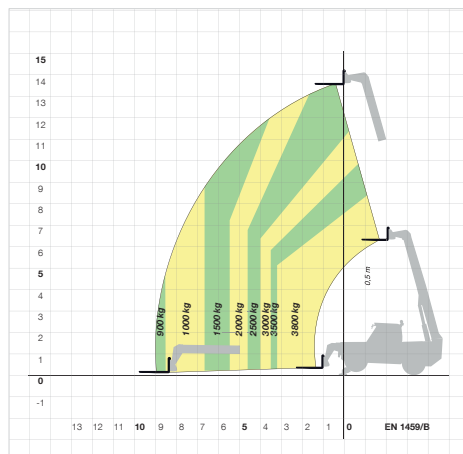


P 38.14

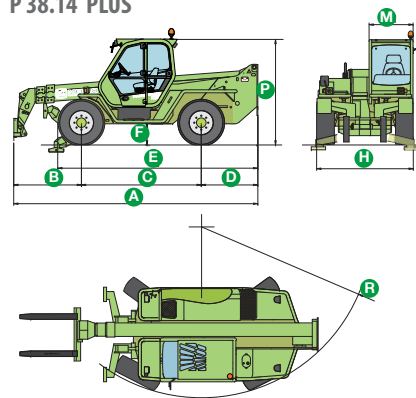


DIMENSIONS P 38.14

A (mm)	5590	F (mm)	480
B (mm)	1360	H (mm)	2220
C (mm)	2750	M (mm)	995
D (mm)	1710	P (mm)	2440
E (mm)	4585	R (mm)	3920

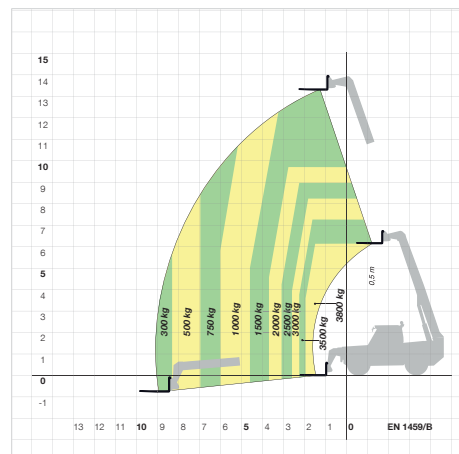
P 38.14 / PLUS WITH FORKS
ON STABILIZERS

P 38.14 PLUS

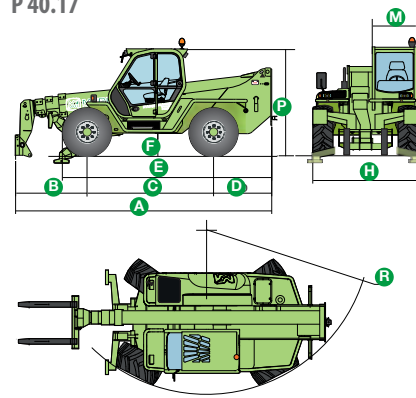


DIMENSIONS P 38.14 PLUS

A (mm)	5590	F (mm)	480
B (mm)	1360	H (mm)	2220
C (mm)	2750	M (mm)	995
D (mm)	1710	P (mm)	2440
E (mm)	4585	R (mm)	3920

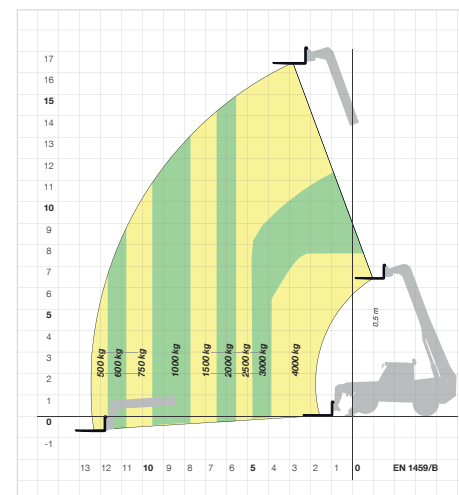
P 38.14 / PLUS WITH FORKS
ON TYRES

P 40.17

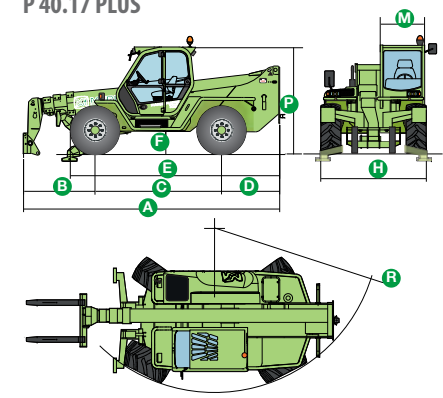


DIMENSIONS P 40.17

A (mm)	5795	F (mm)	480
B (mm)	1505	H (mm)	2400
C (mm)	2875	M (mm)	995
D (mm)	1315	P (mm)	2510
E (mm)	4790	R (mm)	4050

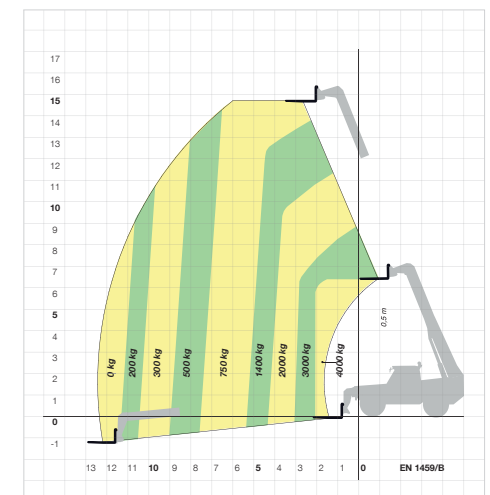
P 40.17 / PLUS WITH FORKS
ON STABILIZERS

P 40.17 PLUS



DIMENSIONS P 40.17 PLUS

A (mm)	5795	F (mm)	480
B (mm)	1505	H (mm)	2400
C (mm)	2875	M (mm)	995
D (mm)	1315	P (mm)	2510
E (mm)	4790	R (mm)	4050

P 40.17 / PLUS WITH FORKS
ON TYRES



The **broadest range on the market.**
14 models for every need, equipped
with 4 cylinder **Tier 4 Interim engines:**

Roto 400 101 HP - 6 models

Roto 600 133 HP - 2 models

Roto MCSS 176 HP - 6 models

ROTO, the rotating
turret telehandlers
designed and created
by Merlo

ROTO

New ROTO range

The most complete, performing and safe

We first launched the Roto range with rotating turret in 1991. Today we present the new Roto generation, equipped with Tier 4 Interim engines, even more advanced, versatile and performing.

DATI TECNICI	50.10S	38.14 38.14S	38.16 38.16S	40.18S	45.19	45.21	50.16 MCSS	45.19 MCSS	45.21 MCSS	60.24 MCSS	40.26 MCSS	40.30 MCSS
Total unladen mass, with forks (kg)	11800	11900 ⁽¹⁾	12100 ⁽¹⁾	13200	14650	15050	14750	14550	15400	18900	16050	19200
Maximum capacity (kg)	5000	3800	3800	4000	4500	4500	5000	4500	4500 ⁽²⁾	6000	4000	4000
Lifting height (m)	10,4	13,9	15,7	17,7	18,7	20,8	16,4	18,8	20,8 ⁽²⁾	24	26	29,5
Turret rotation (degrees)		415 ⁽³⁾			600 ⁽³⁾			Continuous				
Tier 4 Interim engine power (kW/CV)		74,5/101			89/123			125/170				
Max speed (km/h)	40	40 ⁽⁴⁾	40 ⁽⁴⁾	40	25	25	40	40	40	40	40	40
LS Load Sensing or FS Flow Sharing hydraulic system (bar-l/min)		210-115 LS		240-115 LS	240-115 LS			240-115 FS				
Electrical system (V)	12	12	12	12	12	12	12	12	12	12	12	12
Stabilisers with automatic positioning	●	●	●	●	●	●	●	●	●	●	●	●
Hydro-pneumatic suspensions	●	● ⁽⁵⁾	● ⁽⁵⁾	●	-	-	●	●	●	●	●	●
Cab compliant with FOPS (ISO 3449)	●	●	●	●	●	●	●	●	●	●	●	●
Upward tilting cab	-	-	-	-	-	-	-	-	-	●	●	●
Merlin command and control system	-	-	-	-	-	-	●	●	●	●	●	●
Electro-mechanical joystick commands	●	●	●	●	●	●	-	-	-	-	-	-
Electronic joystick commands	-	-	-	-	-	-	●	●	●	●	●	●
Tac-Lock equipment locking	●	●	●	●	●	●	●	●	●	●	●	●
Auxiliary hydraulic service on boom	●	●	●	-	●	●	●	●	●	●	●	●
Hydrostatic transmission	●	●	●	-	●	●	●	●	●	●	●	●
Finger-Touch reverse shuttle	●	●	●	●	●	●	●	●	●	●	●	●
Permanent four-wheel drive	●	●	●	●	●	●	●	●	●	●	●	●
Four-wheel steering	●	●	●	●	●	●	●	●	●	●	●	●
Remote control	○	○	○	○	○	○	○	○	○	○	○	○
Manual air conditioning	○	○	○	○	○	○	○	○	○	○	○	○
Windscreen wiper on roof window	○	○	○	○	○	○	○	○	○	○	○	○
Provision for platform	●	●	●	●	●	●	●	●	●	●	●	●
Front and upper blinds	○	○	○	○	○	○	○	○	○	○	○	○

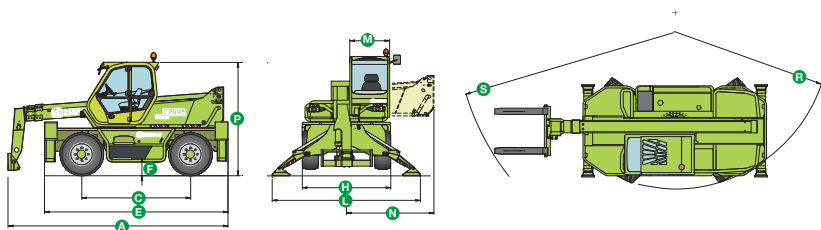
Performances refer to the machine equipped with forks, operating on stabilisers.

(1) S version. In the basic models the weight is 300 kg less; (2) Tower-Jib version with maximum capacity of 800 kg and max lifting height of 31.7 m; (3) $\pm 208^\circ$ / $\pm 300^\circ$ compared to the longitudinal axis of the vehicle;

(4) S version. The basic model offers a maximum speed of 7 km/h; (5) S version. The basic model offers a maximum speed of 25 km/h; (6) Version S. The basic model does not have suspensions.

● As standard. ○ On request.

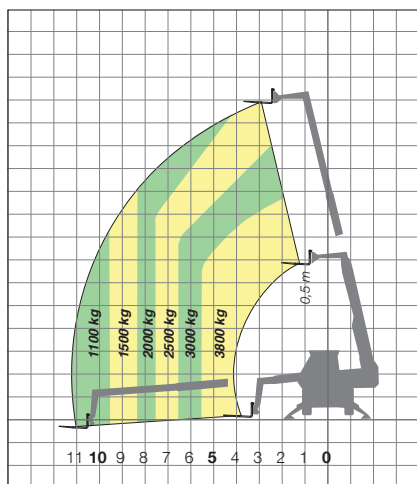
ROTO 38.14 / ROTO 38.14 S



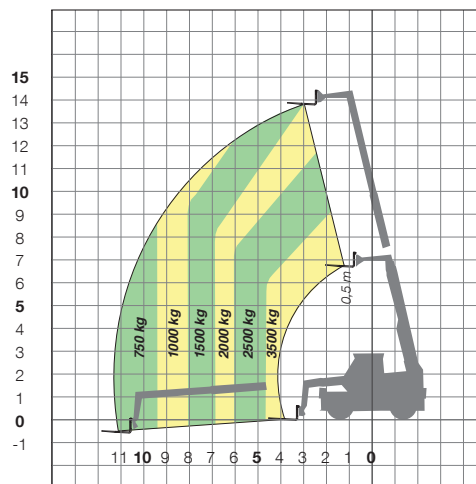
DIMENSIONS ROTO 38.14 / ROTO 38.14 S

A (mm)	5565	H (mm)	2240	P (mm)	2850
C (mm)	2760	L (mm)	3750	R (mm)	3920
E (mm)	4645	M (mm)	995	S (mm)	5380
F (mm)	350	N (mm)	2220		

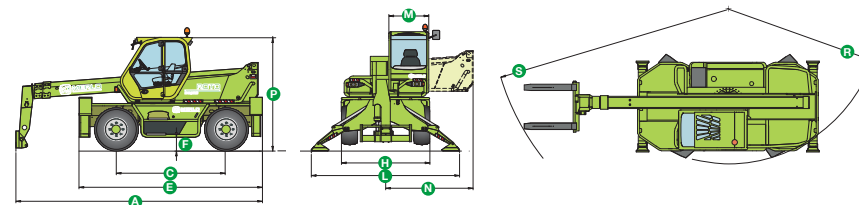
ROTO 38.14 / ROTO 38.14 S
FORKS ON STABILISERS ON 360°



ROTO 38.14 / ROTO 38.14 S
FORKS ON FRONT TYRES



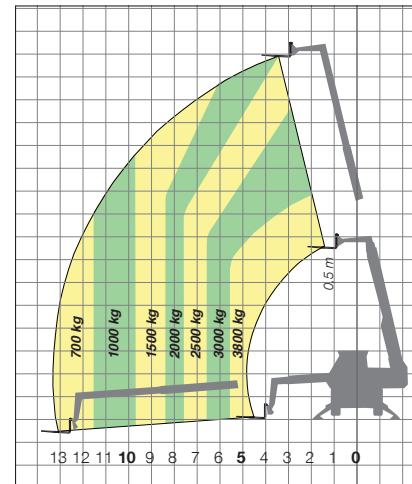
ROTO 38.16 / ROTO 38.16 S



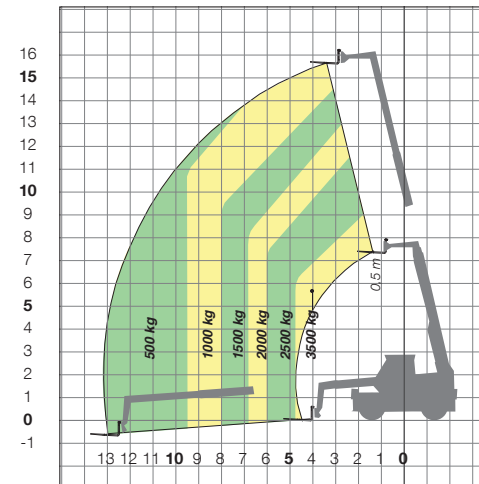
DIMENSIONS ROTO 38.16 / ROTO 38.16 S

A (mm)	6240	H (mm)	2240	P (mm)	3020
C (mm)	2760	L (mm)	3750	R (mm)	4050
E (mm)	4645	M (mm)	995	S (mm)	6000
F (mm)	350	N (mm)	2220		

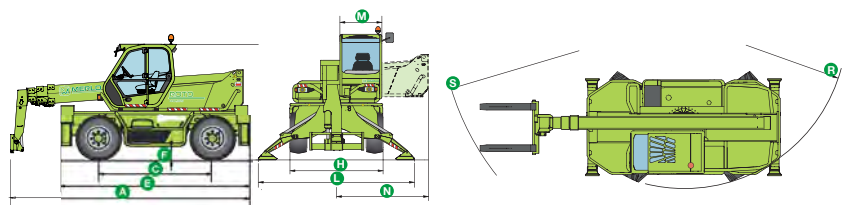
ROTO 38.16 / ROTO 38.16 S
FORKS ON STABILISERS ON 360°



ROTO 38.16 / ROTO 38.16 S
FORKS ON FRONT TYRES



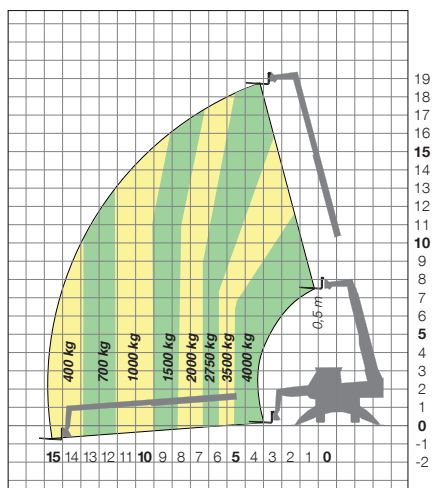
ROTO 40.18 S



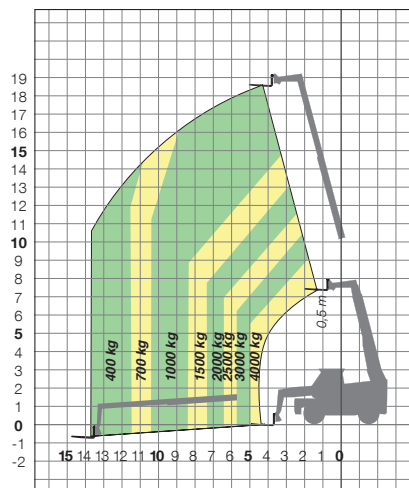
DIMENSIONS ROTO 40.18 S

A (mm)	5977	H (mm)	2240	P (mm)	2960
C (mm)	2760	L (mm)	3750	R (mm)	3920
E (mm)	4645	M (mm)	995	S (mm)	5750
F (mm)	350	N (mm)	2220		

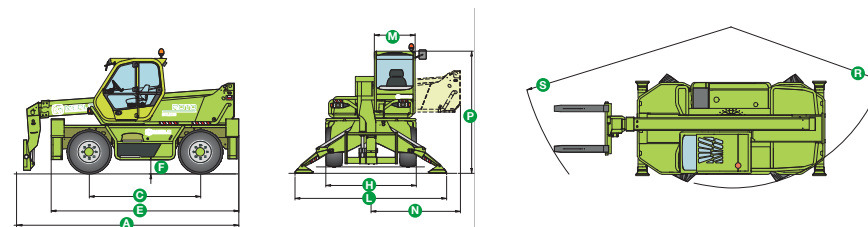
ROTO 40.18 S
FORKS ON STABILISERS ON 360°



ROTO 40.18 S
FORKS ON FRONT TYRES



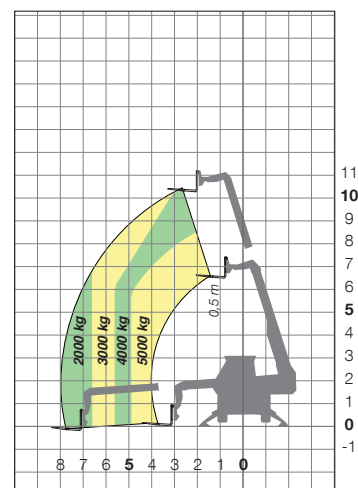
ROTO 50.10 S



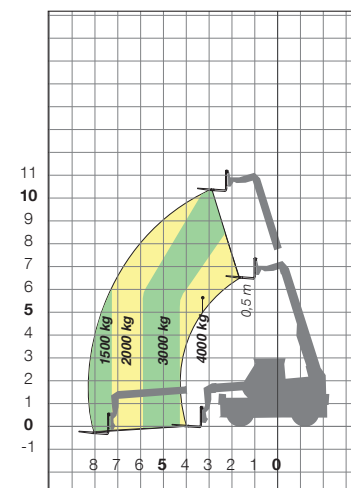
DIMENSIONS ROTO 50.10 S

A (mm)	5340	H (mm)	2240	P (mm)	2850
C (mm)	2760	L (mm)	3750	R (mm)	3920
E (mm)	4645	M (mm)	995	S (mm)	5190
F (mm)	350	N (mm)	2220		

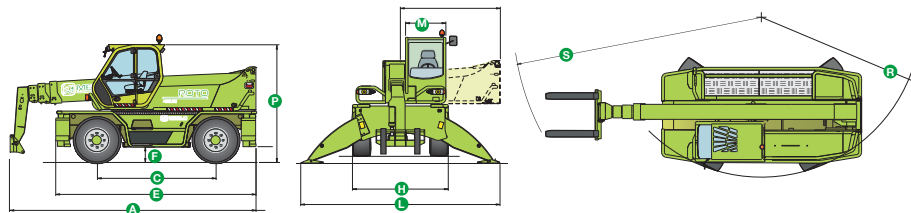
ROTO 50.10 S
FORKS ON STABILISERS ON 360°



ROTO 50.10 S
FORKS ON FRONT TYRES



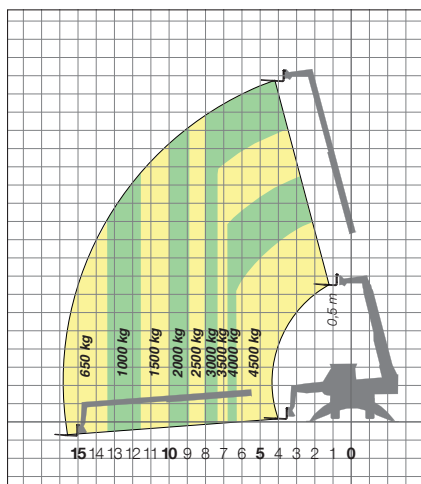
ROTO 45.19



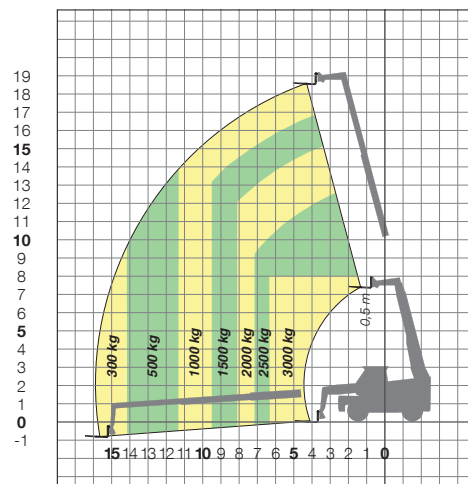
DIMENSIONS ROTO 45.19

A (mm)	6075	H (mm)	2400	P (mm)	2980
C (mm)	2970	L (mm)	5030	R (mm)	4050
E (mm)	5060	M (mm)	995	S (mm)	5150
F (mm)	430	N (mm)	2505		

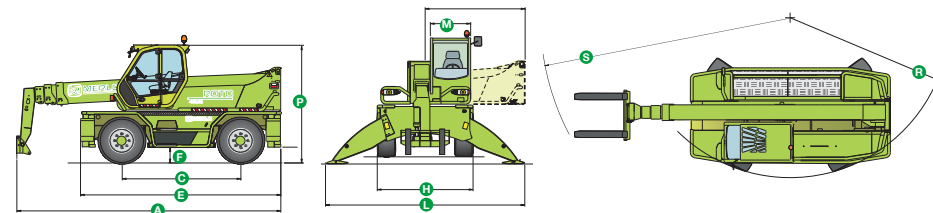
ROTO 45.19
FORKS ON STABILISERS ON 360°



ROTO 45.19
FORKS ON FRONT TYRES



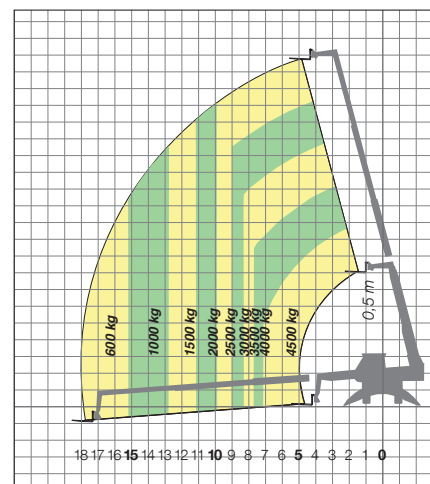
ROTO 45.21



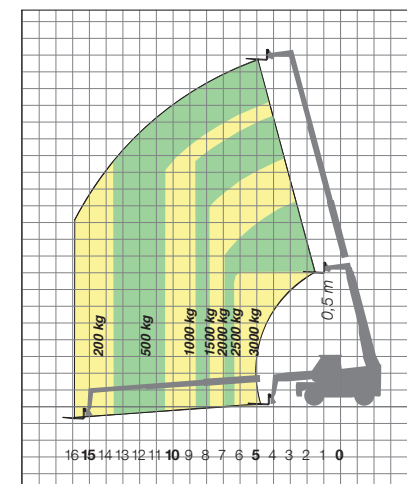
DIMENSIONS ROTO 45.21

A (mm)	6600	H (mm)	2400	P (mm)	2980
C (mm)	2970	L (mm)	5030	R (mm)	4050
E (mm)	5060	M (mm)	995	S (mm)	6100
F (mm)	430	N (mm)	2505		

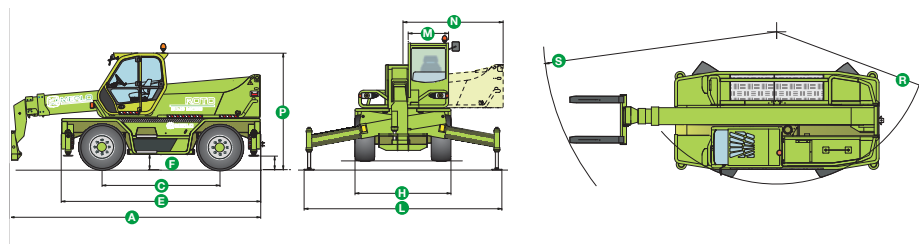
ROTO 45.21
FORKS ON STABILISERS ON 360°



ROTO 45.21
FORKS ON FRONT TYRES



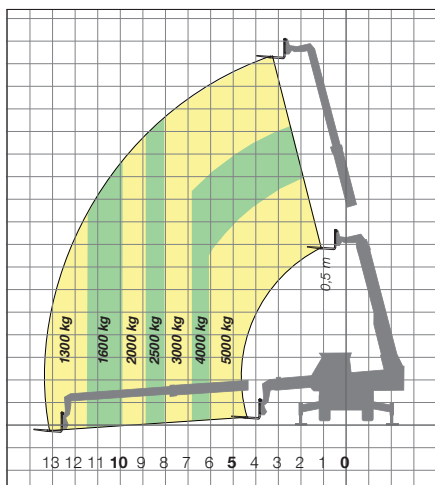
ROTO 50.16 MCSS



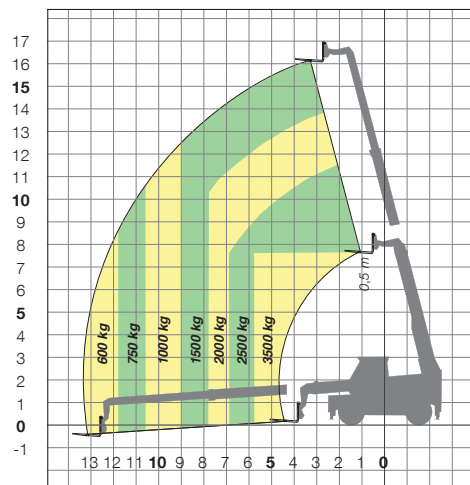
DIMENSIONS ROTO 50.16 MCSS

A (mm)	6380	H (mm)	2400	P (mm)	2950
C (mm)	2990	L (mm)	4950	R (mm)	4050
E (mm)	5030	M (mm)	995	S (mm)	5900
F (mm)	330	N (mm)	2505		

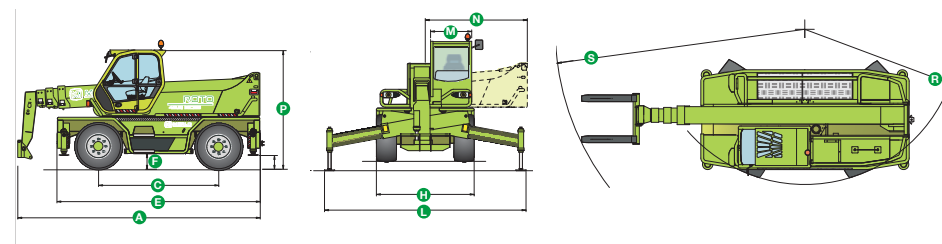
ROTO 50.16 MCSS
FORKS ON STABILISERS ON 360°



ROTO 50.16 MCSS
FORKS ON FRONT TYRES



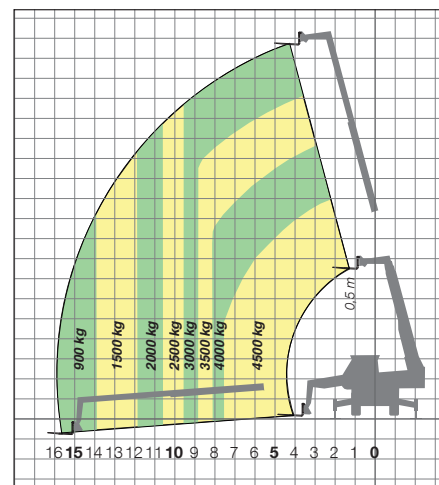
ROTO 45.19 MCSS



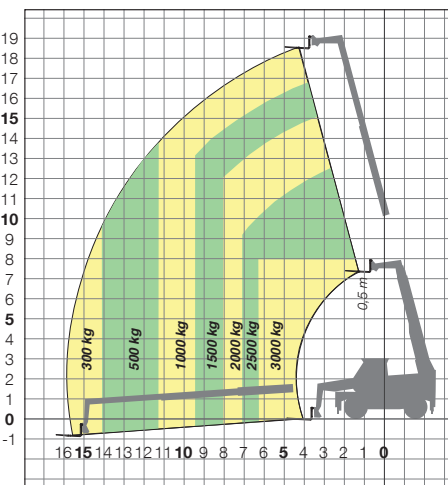
DIMENSIONS ROTO 45.19 MCSS

A (mm)	6075	H (mm)	2400	P (mm)	2950
C (mm)	2990	L (mm)	4950	R (mm)	4050
E (mm)	5030	M (mm)	995	S (mm)	5150
F (mm)	330	N (mm)	2505		

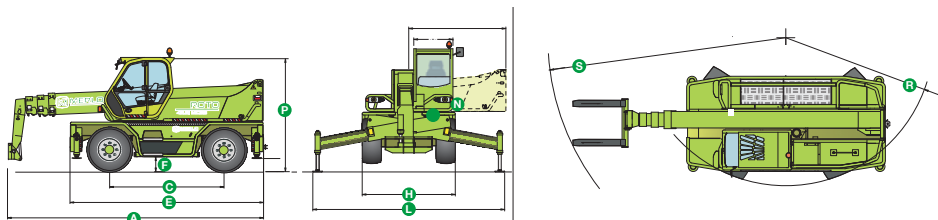
ROTO 45.19 MCSS
FORKS ON STABILISERS ON 360°



ROTO 45.19 MCSS
FORKS ON FRONT TYRES



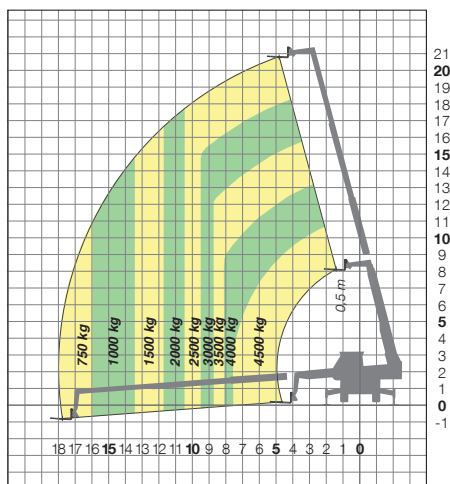
ROTO 45.21 MCSS



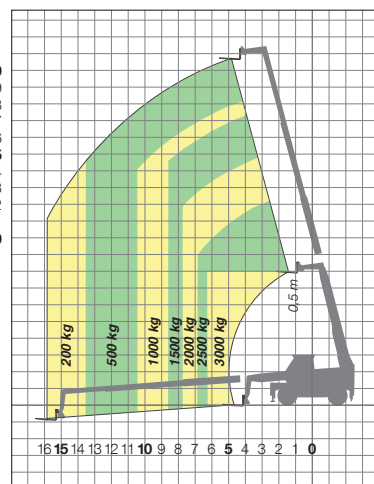
DIMENSIONS ROTO 45.21 MCSS

A (mm)	6980	H (mm)	2400	P (mm)	2990
C (mm)	2990	L (mm)	4950	R (mm)	4050
E (mm)	5030	M (mm)	995	S (mm)	6580
F (mm)	330	N (mm)	2505		

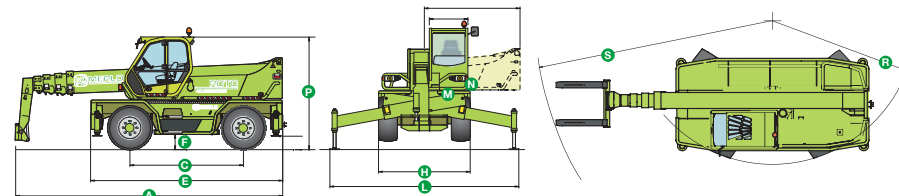
ROTO 45.21 MCSS FORKS ON STABILISERS ON 360°



ROTO 45.21 MCSS FORKS ON FRONT TYRES



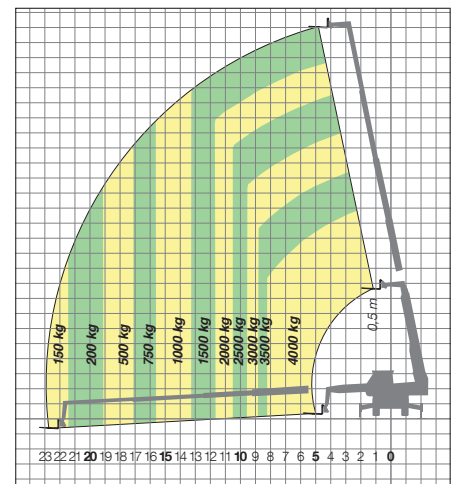
ROTO 40.26 MCSS



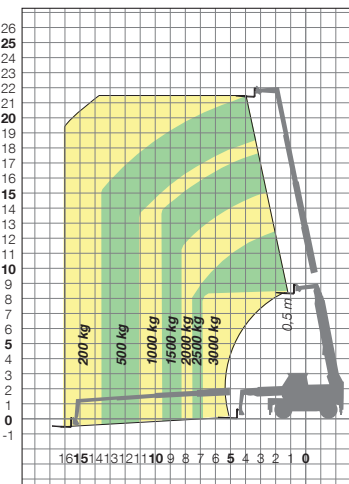
DIMENSIONS ROTO 40.26 MCSS

A (mm)	6980	H (mm)	2400	P (mm)	2990
C (mm)	2990	L (mm)	4950	R (mm)	4050
E (mm)	5030	M (mm)	995	S (mm)	6580
F (mm)	330	N (mm)	2505		

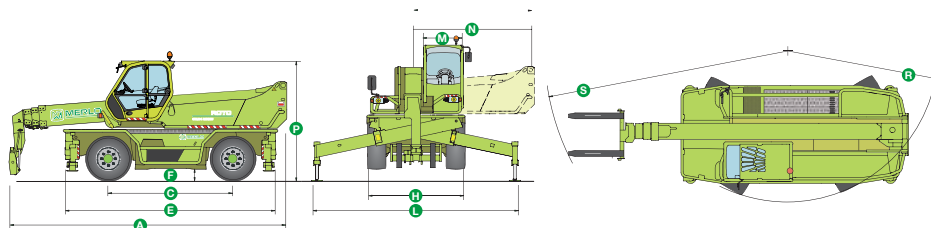
ROTO 40.26 MCSS FORKS ON STABILISERS ON 360°



ROTO 40.26 MCSS FORKS ON FRONT TYRES



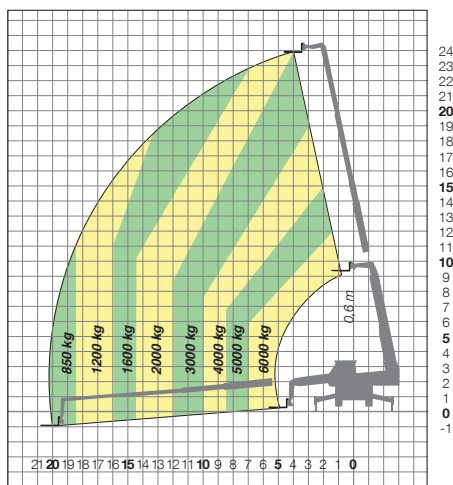
ROTO 60.24 MCSS



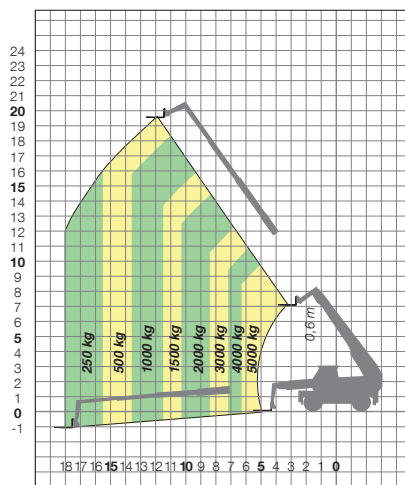
DIMENSIONS ROTO 60.24 MCSS

A (mm)	7430	H (mm)	2490	P (mm)	3100
C (mm)	3200	L (mm)	5275	R (mm)	4450
E (mm)	5540	M (mm)	995	S (mm)	6500
F (mm)	300	N (mm)	3000		

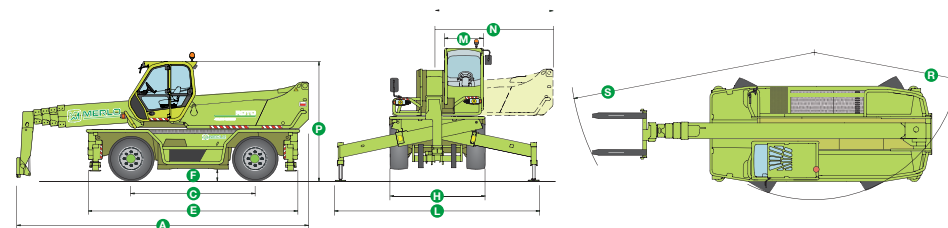
ROTO 60.24 MCSS FORKS ON STABILISERS ON 360°



ROTO 60.24 MCSS FORKS ON FRONT TYRES



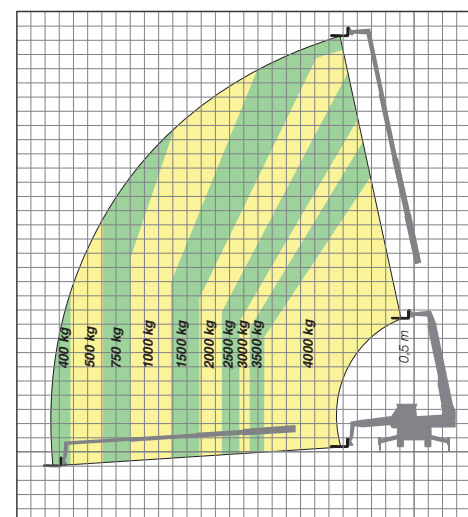
ROTO 40.30 MCSS



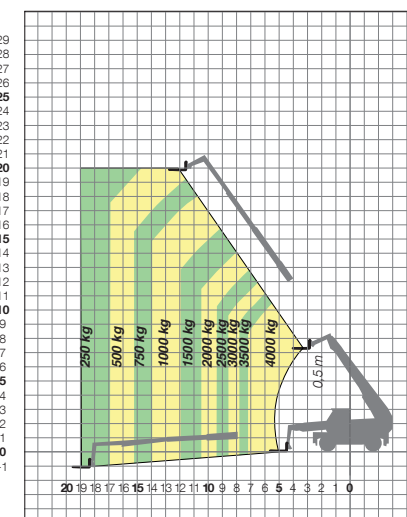
DIMENSIONS ROTO 40.30 MCSS

A (mm)	7560	H (mm)	2490	P (mm)	3100
C (mm)	3200	L (mm)	5275	R (mm)	4450
E (mm)	5540	M (mm)	995	S (mm)	6700
F (mm)	300	N (mm)	3000		

ROTO 40.30 MCSS FORKS ON STABILISERS ON 360°



ROTO 40.30 MCSS FORKS ON FRONT TYRES





MERLO CDC DISPLAY

1. with attachment in use
2. Work area
3. Load positioning (in work area)
4. Load detection menu
5. Operating parameters
6. Work information
7. Stability index

Merlo CDC - Dynamic Load Control

The display located in the cab shows the main M CDC operating parameters (see Merlo CDC Display). The operator is kept informed as far as the safety level is concerned by a bright spot displayed on the load diagram like a “traffic light”.

A green light indicates conditions of maximum safety. A yellow light means that the operator must proceed with caution; if the red light appears, the M CDC system will block any manoeuvres that could compromise safety. The M CDC system is always activated, even when the machine is moving, and therefore exceeds the requirements of the EN15000 safety standard, ensuring maximum safety in all situations.

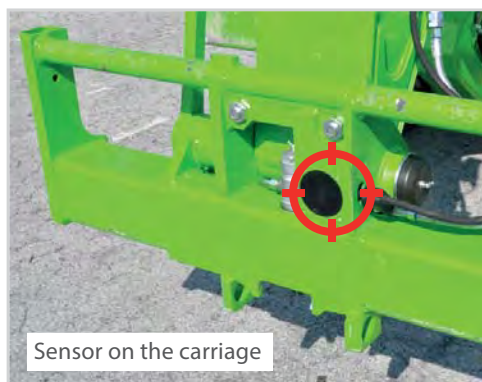


Safety/Comfort

Level 2 ROPS and FOPS type approval for maximum “passive” safety. Maximum visibility in all directions thanks to the low pivot point of the telescopic boom and the longitudinal engine: excellent front, side, rear and upwards visibility so that the operator can follow the boom along its entire travel.



Sensor on the attachment



Sensor on the carriage

Automatic attachment recognition

Merlo engineers have developed an «automatic attachment recognition system» that consists of a sensor applied to every attachment produced by the Merlo Group.

The sensor relays the relevant attachment data to the M CDC electronic control unit. The Control unit receives the data and installs the corresponding load diagram in the M CDC system. In this way the telescopic boom operates in conditions of maximum dynamic safety.

TECHNOLOGIES

Cab comfort Turbofarmer modulari

Largest cab on the market at 1010 mm - also preset for pressurisation: visibility has always been one of Merlo's telehandlers strong points. Designers have consolidated this feature by adopting a curved windshield named "Merlo Sky-View" which ensures maximum visibility of the load even when the telescopic boom is fully extended.

The highly **ergonomic driving position is optimised by the** steering wheel and the tilting digital instrument panel, backed up by an **8.5" display dedicated to the M CDC system**; its functions are displayed by a practical and functional automotive-style knob.

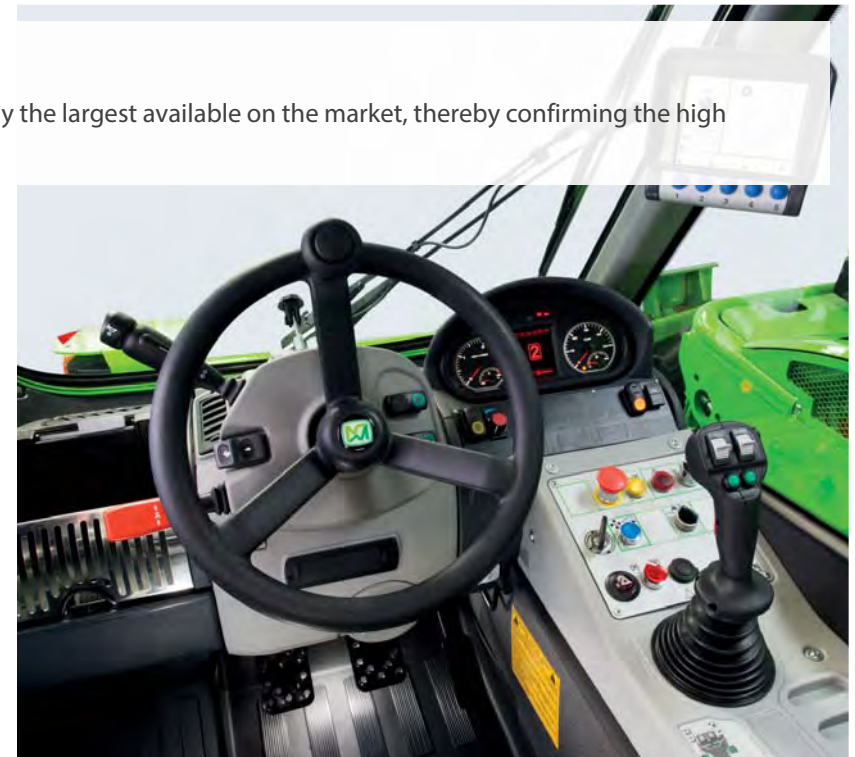
NEW MODULAR CAB

Same selling point: comfortable cab 1010 mm

The cabs on the modular and Panoramic models are always 1010 mm wide. This cab is still today the largest available on the market, thereby confirming the high standards offered by Merlo cabs in terms of overall comfort



PANORAMIC CAB



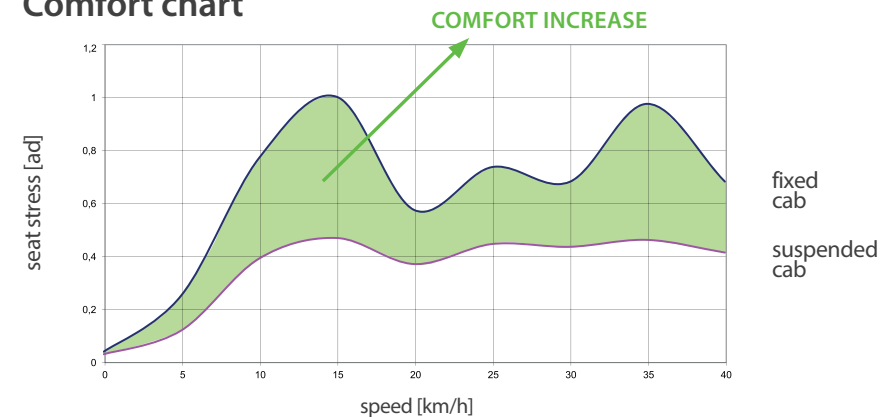


The CS (Cab Suspension) system

THE ONLY ONE AVAILABLE ON THE TELEHANDLER MARKET

Merlo has been the first manufacture, in the telehandler sector, to offer a hydropneumatic suspended cab. It can be activated by the operator when it is required and it is studied to reduce stresses, vibrations and noise transmitted from the ground to the operator, ensuring in this way the maximum comfort and high safety standards.

Comfort chart



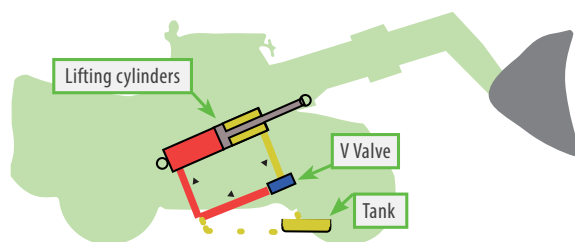
BSS hydro-pneumatic boom suspension (optional)

It can be activated by the operator and it is automatically disactivated below 3 km/h. It dampens the boom on uneven ground for quicker and safer load handling operations.



Pneumatic seat for improved comfort

TECHNOLOGIES



Regenerating system

In order to improve productivity, the HM family is fitted as standard with a regenerating system designed to increase the angular speed of the boom during load handling operations. The system makes it possible to automatically increase the speed by 36% compared to similar systems not equipped with the regenerating function.

Levelling system

System for correcting tilt, built into the chassis, allowing the operator to correct ground slopes and work in complete safety. The correction available from the frame levelling system can be combined with the effects of the stabilizers, so as to keep the frame in a horizontal position even with a transverse slope of 24%.



WITHOUT STABILIZERS

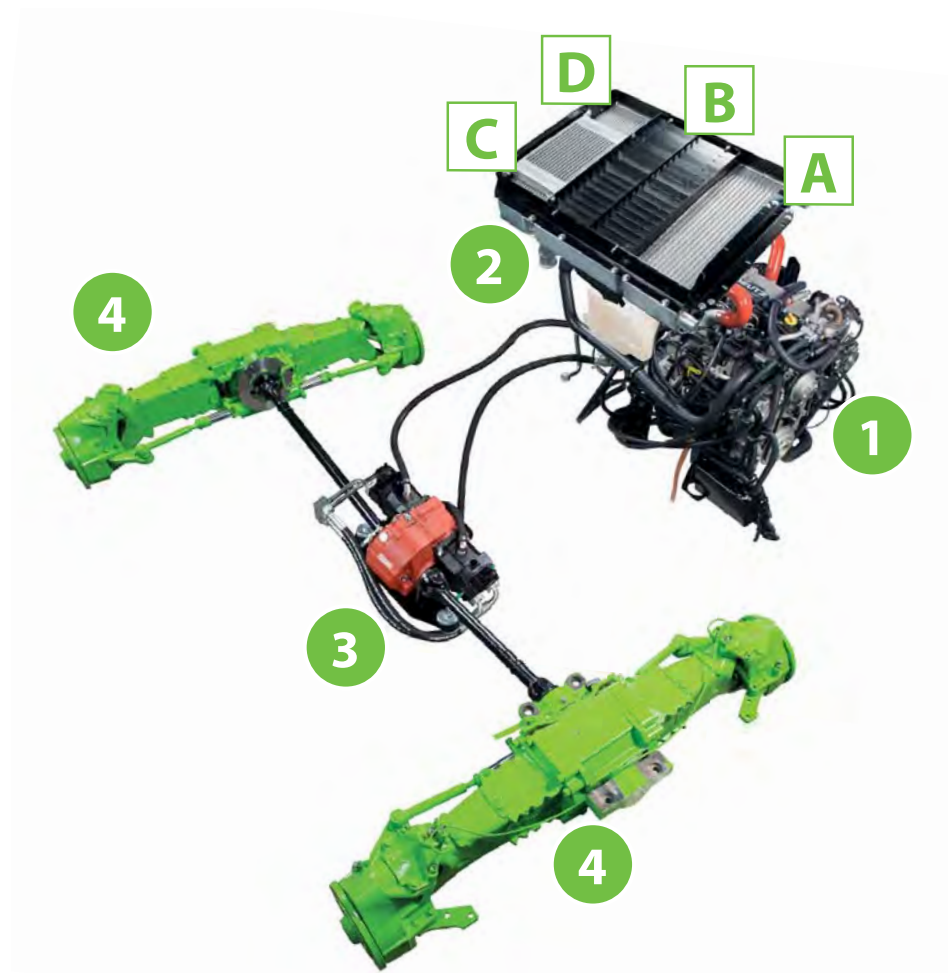


WITH STABILIZERS

Side-shift system

The boom can be moved sideways by the operator so that the load can be positioned with maximum precision, comfort and time-saving.





TURBOFARMER II POWERTRAIN

1. Tier 4 Interim Engine
2. Radiant pack
3. CVTronic transmission
4. Merlo axles

FAN DRIVE AND DEDICATED RADIATORS

For temperatures less than 40°C, the fan comes on in an inverted condition for 30" and then returns to normal use

- A. Intercooler radiator
- B. Engine radiator liquid
- C. Hydraulic oil radiator
- D. Hydrostatic oil radiator

CVTronic Gearbox

The CVTronic transmission ensures smooth acceleration without torque interruption from 0 to 40 km/h.

The transmission comprises two axial piston hydrostatic motors powered by the electronically-controlled hydraulic pump.

At low work speeds, the two motors work jointly, with an increase of + 12% in comparison with conventional hydrostatic transmissions.

During transport, the second hydrostatic engine is automatically disengaged by the control system and the oil from the pump powers the main hydrostatic engine that pushes the machine to the maximum speed.

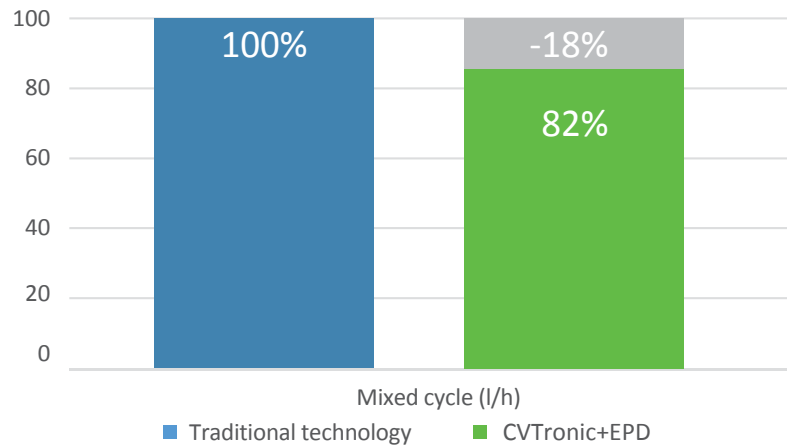


"Fan Drive" system

Some models are equipped with the "Fan Drive" system that allows you to change the rotation direction of the fan, from suction to blowing. For temperatures less than 40°C, the fan comes on in an inverted condition for 30" and later returns to normal use

Reduction in consumption

Merlo CVTronic technology + EPD



EPD “Eco Power Drive”

Designed, patented and built by Merlo, the Epd system achieves tangible savings thanks to an automatic electronic system that monitors engine parameters (such as rpm, power curves, torque and consumption) as well as the operating status of the telehandler, speed, weight, slope gradient in order to ensure the necessary torque.

Every parameter is taken into consideration by the Epd control unit. This unit is placed between the accelerator pedal and the diesel engine injection pump. It manages engine rpm and consequently vehicle speed, sending the correct quantity of fuel to the combustion chamber, optimising engine rpm and maximising fuel savings.

Diesel engine rpm potentiometer

Set at the required rpm by the operator, the potentiometer **1** does not affect transfer speed. This is a very practical feature for tasks requiring constant rpm.

EPD Plus includes the “Speed Control” and “Eco” Functions

The Speed Control function **2** has been conceived like a Cruise Control as far as automotive is concerned. Once the machine reaches the desired speed the operator can maintain it by simply pressing the Speed Control switch.

The speed is maintained constant and the operator can release his foot from the gas pedal. On the other hand to disengage it the operator has to press either the brake pedal or the Speed Control switch once again.

The Eco function **3** limits the diesel engine rpm for further fuel savings.

EPD Top - auto-accelerating Joystick -

This unique device in the world of telehandlers integrates the electronic joystick **4** and automatically increase diesel engine rpm (up to a maximum set using the potentiometer) when the control is operated above the action threshold (excursion of more than 20%), without increasing drive speed.



ROTO stabilizers

The entire family is equipped with automatic stabilisation and levelling as standard



ROTO 400°



ROTO 600°



ROTO MCSS



A unique, intuitive and practical control console

- **Three types of stabilizers**
 - The stabilisers are **practical** elements and are **simple** to **activate** by the operator
- **The controls** are located in a **safe position**, so as to avoid **accidental activation** of the stabilizers

MCSS cab

Electronic joystick and Merlin system



The MCSS version uses the joystick on the reclining armrest. The right console contains the display, the Merlin interactive instrument panel and the control panel for the telehandler stabilisers.



Interactive Merlin system instrument panel

- The MCSS uses the **Merlin System** (Merlo Interactive Network equipped with digital screen)
- The instrument panel has buttons for interactive management of the main parts of the machine and graphic display
- The **MCSS console** is specifically for telehandler stabiliser management
- Second **armrest with Joystick** (opt) allows multiple operations to speed up operations



The second armrest with joystick (optional) allows extension of the boom, carriage angling and control of the attachments.

The combined action with the basic joystick (image on the right) speeds up operations for better productivity.

Tilting cab as standard on Roto 60.24 MCSS, 40.26 MCSS and 40.30 MCSS

Greater productivity and comfort

From the driver's seat, the operator presses the dedicated button to activate cab tilting. The longitudinal tilting reaches 18° and makes it possible to monitor load movements when working at height. This system (**Merlo exclusive**) guarantees:

- ✓ More comfort
- ✓ Better ergonomics
- ✓ Increased safety



The switch located on the control console allows:
A) Cab ascent B) Cab descent

Advanced pneumatic suspension system and axles

Comfort, versatility and safety



Axles entirely designed and built by Merlo

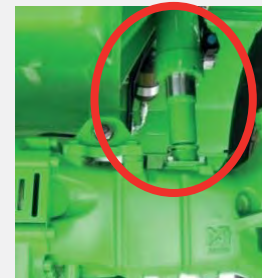
There are two types of axles: with planetary gear units for 60.24 MCSS and 40.30 MCSS models portal axles for the rest of the Roto range.

Every axle has two dry brakes, designed to ensure maximum efficiency, reducing consumption. Merlo also offers parking brakes as standard, which automatically engage when the diesel engine is turned off.

Electronic Active Suspension (EAS) for safe transport

To handle driving on rough terrain, Merlo has designed the EAS System, consisting of 4 hydraulic cylinders, a quadrilateral with longitudinal arms and an electronically managed hydropneumatic circuit.

The system's versatility allows the operator to manually set both lateral and longitudinal tilting as shown in the dedicated box.



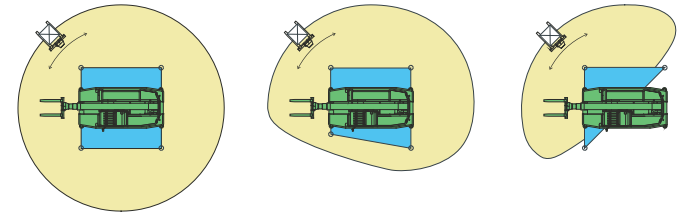
Manual EAS set-up

Lifting on tyres

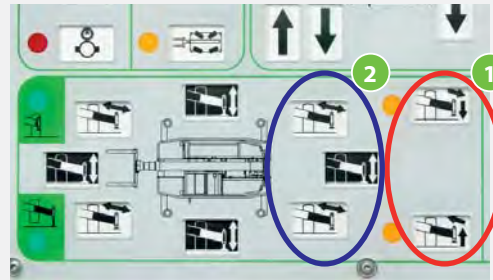
When lifting on tyres and on sloping ground, the operator sets the suspensions laterally up to $\pm 9^\circ$, and longitudinally up to $\pm 5^\circ$, so as to lift loads on wheels and in total safety.

MCSS stabilisation system

Easy, intuitive and safe



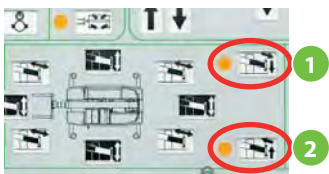
The stabiliser arms can be extended depending on the work area. The Merlin system is also available to manage the dynamic balance of the load, automatically and in real time



4 independent stabilisers. The possibility to stabilise with the booms totally "closed" is guaranteed. The stabilising is done in two phases:
1. Side exit of the boom (blue arrow) 2. Descent of the jack stem (red arrow).



Management of the jacks (independent in the front and in a pair in the back) to obtain chassis levelling.



Keep button 1 pressed for three seconds to activate the **self-stabilising** mode. Button 2 activates self-retraction.

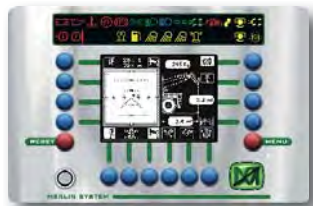


Self-levelling is carried out automatically at the completion of self-stabilisation, ensuring that the chassis is horizontal for maximum operating safety.

- All Roto models are fitted with a **console** to **manage** the stabilisers
- On the **MCSS** models, the telehandler stabilisers can be positioned at **any width**
- The MCSS models offer **manual levelling** of the stems of the **vertical jacks**
- **Automatically**, the self-stabilising and self-levelling are activated

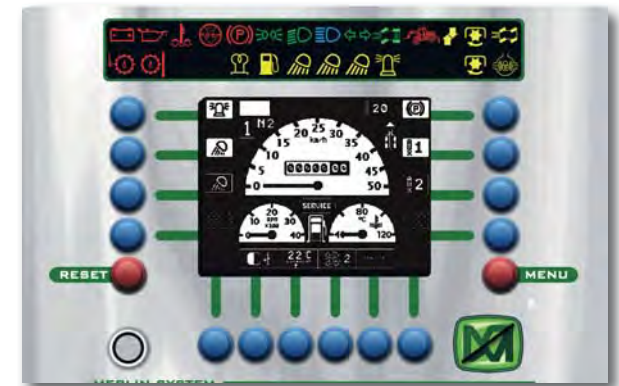
Merlin - Merlo Local Interactive Network

Interactive system that displays several levels of information for safety and productivity

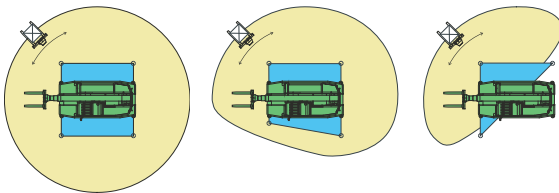


Geometry of the machine and position of load

On a special screen, Merlin shows the position and displacement of the centre of gravity. The system monitors the machine's stability and shows its geometric configuration (position of the load). The stabilisers can be positioned according to the surface available and the morphology of the ground



The Merlin system displays the main information of the instrument panel



Footprint of the stabilisers

The Merlin system adjusts the load chart based on the footprint of the stabilisers and verifies the machine's stability automatically and in real time.



Maintenance and diagnostics

The third and fourth screens of the Merlin system are for monitoring, respectively:

- ✓ Routine maintenance
- ✓ System anomalies (diagnostics)



Work area programming

Allows you to program the work area and rotation angle of the turret to facilitate operations in repetitive jobs and increase operating safety, blocking movements outside the set area

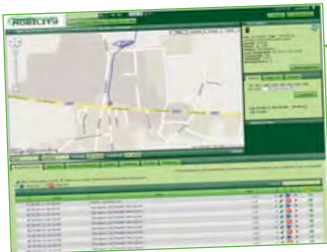
- The **Merlin instrument panel** comes with buttons and an integrated display
- **Nine menus** that can be selected interactively
- Merlin ensures a **high diagnostic level** on board the machine
- The Merlin system adjusts the load chart, manages the dynamic balance in real time, and graphically and numerically shows the load stability details

MerloMobility: innovative and modern management system

Knowledge is essential; just click!

Merlo offers a dedicated, efficient and punctual service with the data managed by a protected data processing centre.

The MerloMobility functions can be summarised as follows:



Logistics: fleet management

With the main screen, the customers can view all of their vehicles on the map.

Anti-theft device

Allows customers to receive notification whenever a "theft risk" event occurs, such as:

- ✓ Ignition override
- ✓ Cutting of cables
- ✓ Entrance/Exit from work area



• Telemetry

This function provides access to the following functions:

- ✓ Virtual instrument panel: monitors the geometric status of the machine in real time
- ✓ Logbook: access to the entire machine history, exported by Excel.
- ✓ Maintenance management
- ✓ Planning of routine maintenance to ensure maximum efficiency
- ✓ Possibility to carry out remote pre-diagnosis by authorised warehouses



- The system uses a **GSM module** to communicate with the centre and a **GPS module** for localisation.

- **Access** to the system through a **protected** internet connection

- **Services** offered by MerloMobility:

- Logistics • Anti-theft
- Diagnostics • Telemetry

- Allows **monitoring** of all the parameters and functionalities **remotely** using internet access from a PC or dedicated Apps for handheld devices or Smartphones

From the idea to development of multi-applicability

More efficiency and productivity thanks to Merlo

Merlo adopts simple and effective guidelines in the evolution of the product.

From conception to development, everything is studied, designed and created in the Group's plants. This simple "rule" also applies to attachments.

Backed by years of experience, Merlo's technicians have developed a wide range of attachments, divided by type and load capacity.

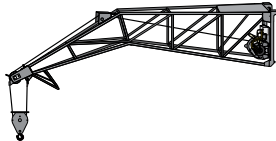
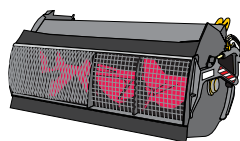
The multi-function Merlo systems, immediately operative in a multitude of different applications, are among the most advanced technology to offer efficiency, comfort and above all, safety in everyday work.



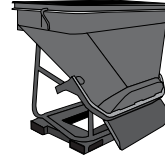
CARRIAGE-MOUNTED HOOK



FLY JIB WITH WINCH

MIXING BUCKET
FOR CONCRETE

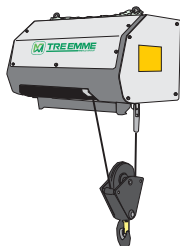
CONCRETE BUCKET



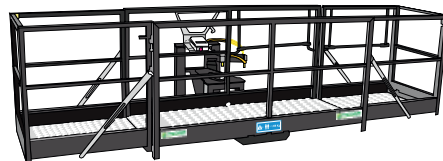
LIFTING BOOM



WINCH



THREE-SIDED EXTENDIBLE PLATFORM





CINGO

Tireless, unbeatable, incomparable. Arriving everywhere with excellent performance

Merlo experience applied to compact multi-purpose tool carriers



The Cingo universal multi-purpose tool carriers with hydrostatic transmission are unique on a technological level and exclusive in terms of performance in offering infinite possibilities of use, especially where conventional off-road equipment does not work.

The exclusive patented fast change system for innumerable interchangeable tools means that the machine is operative and efficient in just a few seconds even in very different working conditions. Smooth movements, progress controls, full exploitation of power and maximum versatility - just some of the vital features of the Cingo system.

Even more technology comes with the remote-control version and new models fitted with gear motors that transmit torque directly to the tracks for maximum traction and safety thanks to built-in parking brakes.

CINGO MODELS	TRANSPORTERS		MULTI-FUNCTION			MULTI-FUNCTION WITH GEAR MOTORS		
	NEW M500	M6.2 TD	M8.2 TD-D	M8.2 D	M8.2 Top Allargabile	NEW M4.3 Turbo	NEW M8.3 Plus	NEW M12.3 Plus
Capacity (kg)	500	600	800	800	800	400	800	1200
Engine	Petrol	Petrol	Diesel	Diesel	Diesel	Diesel	Diesel	Diesel
Net power (HP)	5,5	8,2	13,3	13	17	33	17	21
Transmission	Modification with valve Overcenter	Hydrostatic	Hydrostatic	Hydrostatic	Hydrostatic	Hydrostatic	Hydrostatic	Hydrostatic
Quick-fitting attachments	-	-	-	YES	YES	-	YES	YES
Hydraulically variable track width (mm)	-	-	-	-	840 - 1100	660 - 910	-	-



TRE EMME

High-performance vehicles, ideal for forest, road, rail and contract maintenance

High power tool carrier tractors. 8 models with power from 150 to 350 HP



For users needing multi-purpose machinery designed for heavy-duty applications capable of offering **excellent performance at the same time as being easy to use**, Merlo offers a broad range of high power tool carriers ideal for applications in forestry, orchards, snow clearance, road and rail maintenance.

The wide range of attachments together with mechanical, hydraulic and electronic power transmission systems helps to ensure effective and efficient work sites capable of achieving maximum performances and productivity.

The compact dimensions and easy handling of these systems, together with the high degree of comfort and exclusive 360° visibility mean they are **ideal for professionals seeking results of uncompromising quality**.

- ✓ **X series: forestry tractors** 3 models with powers of 200, 250 and 350 HP
- ✓ **R&S series: high-performance tool-holder specialised in snow-ploughing.**
3 models with powers of 200, 250 and 350 HP
- ✓ **VR Series** multifunctional tool-holder with telescopic booms for cleaning road sides.
1 model with 150 HP power.
- ✓ **MC series: multifunctional tool-holder for municipalities and contract work.**
1 model with 160 HP power.

TECHNICAL INFORMATION	MM 200 X	MM 250 X	MM 350 X	MM 200 R&S	MM 250 R&S	MM 350 R&S	MM 150 VR	MM 160 MC
Power (kW/HP)	147/200	183/250	260/350	147/200	183/250	260/350	113/153	118/160
Max. speed (Km/h)	40	40	36	40	40	36	40	40
Unloaded weight (kg)	6800	7200	9000	7000	7200	9200	7000	7000
Hydraulic PDF (L/min-bar)	300-420	300-420	420-500	300-420	300-420	420-500	170-350	170-350

● As standard. ○ On request.

50 YEARS OF CONSTANT COMMITMENT TO WORKING TOGETHER WITH YOU

- 1964** - Establishment of the Merlo Group
- 1966** - DM and DBM: the first dumper and the first self-loading concrete mixer
- 1981** - SM: the world's first telescopic handler
- 1987** - Panoramic: the world's first telehandler with side engine
- 1991** - Roto: the world's first telehandler with rotating turret
- 1996** - Turbofarmer: the first telehandler in Europe type-approved as an agricultural tractor
- 1998** - P26: the ultra-compact telehandlers
- 2000** - Multifarmer: the first agricultural tractor with telescopic boom
- 2001** - MM: the first forestry attachment-carrier
- 2010** - Hybrid: the first diesel/electric hybrid telehandler
- 2012** - Modular: a new concept of telescopic handler
- 2013** - Three important awards at the Agritechnica in Hanover:
 - Hybrid 42.7: gold medal for technological innovation
 - Turbofarmer II range: "machine of the year 2014"
 - Multifarmer 40.9: "a milestone in agricultural machinery"
- 2015** - New modular Medium Duty and Compact Turbofarmer named "machine of the year" 2015 at Sima in Paris



MERLO S.P.A.

Via Nazionale, 9 - 12010 S. Defendente di Cervasca - Cuneo - Italia

Tel. +39 0171 614111 - Fax +39 0171 684101

www.merlo.com - info@merlo.com

The Telehandlers outlined in this documentation can be equipped with optional or special accessories that are not included in standard equipment but only on request.

In certain countries, not all models or attachments may be available because of market or regulatory restrictions.

Technical data and information are up-to-date at the time of printing this documentation. Merlo reserves the right to make modifications arising from natural technological evolution without any obligation on its part.

Your trusted Merlo Dealer will be delighted to provide you with all updates concerning our products and services.